

Transportation Project Delivery

Carla Stueve, Director

Leadership staff

Transportation Project Delivery



Director
Carla Stueve



Assistant Director
Nariman Vanaki



**Capital Program
Manager**
Jason Pieper



**Planning Division
Manager**
Chad Ellos



**Design Division
Manager**
Jessa Trbojevich



**Bridge Division
Manager**
Jake Bronder



**Construction Division
Manager**
Open position



**Business
Manager**
Kariann Gottesman

Transit and Transportation network

Road and bridge

- 2,200 lane miles
- 148 bridges*

* does not include HCRRRA bridges

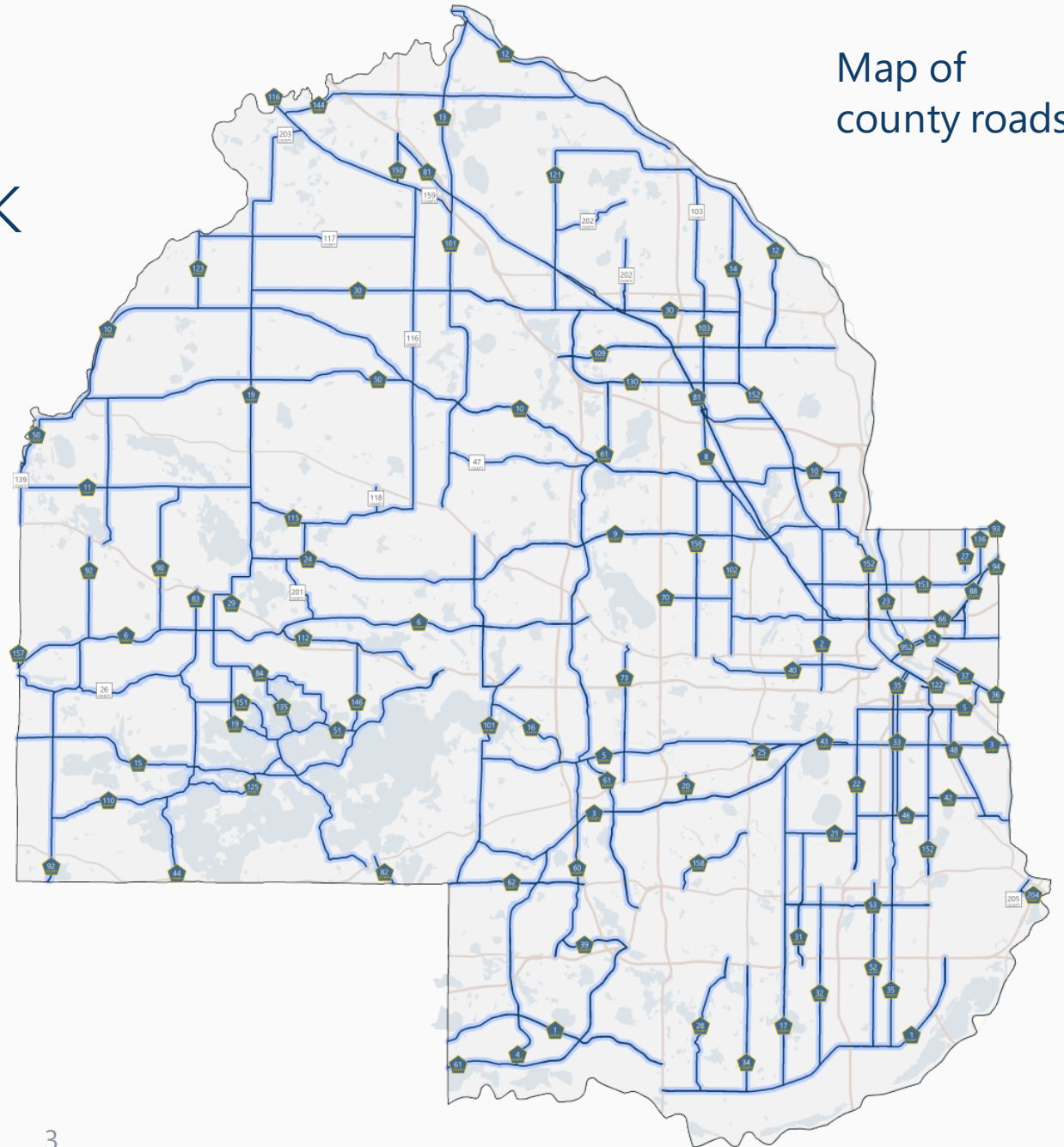
Bike and pedestrian

- 810 bikeway miles
- 400 sidewalk miles

Transit

- 90 transit routes on system
- 20 miles of transitways

Map of county roads



Transportation overview

Transportation Project Delivery

Transportation Operations



Planning

- System planning
- Data collection
- Transportation safety
- Capital Improvement Program (CIP)



Design

(Road and Bridge)

- Community engagement
- Stakeholder input
- Multi-modal designs
- Plans and specifications



Construction

- Contract administration
- Inspection/material testing
- Construction surveys
- Project oversight/management



Operations

- Administration
- Fleet services
- Asset management
- Road operations
- Traffic operations

Transportation Planning

- Strategic planning
- Multi-modal data collection
- Accessibility for walking and rolling
- Transportation safety program



MOBILITY 2040
Guidance for the county's overall transportation system

MODAL PLANS Pedestrian • Bike • Transit • Freight • Roads

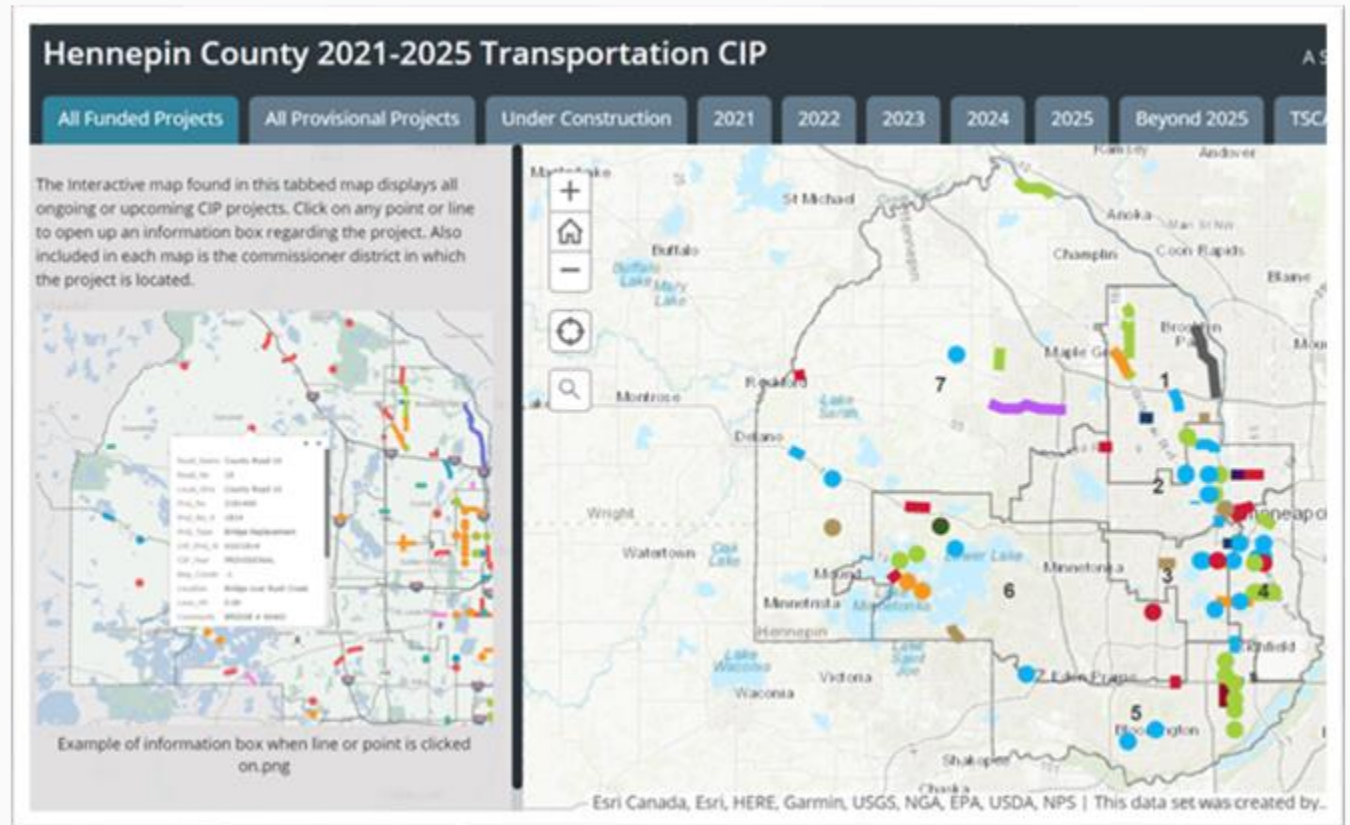
Hennepin County Toward Zero Deaths

A row of five blue icons: an open book, a shield with a star, a construction worker in a hard hat and vest, an ambulance, and two people with arrows indicating a cycle or process.

Transportation Capital Program

Capital Improvement Program

- Five-year capital program
- Prioritizes system needs
- Provide recommendations to the county board



Design

- Project development
- Work with community and project stakeholders
- Address multi-modal needs
- Create plans and specifications



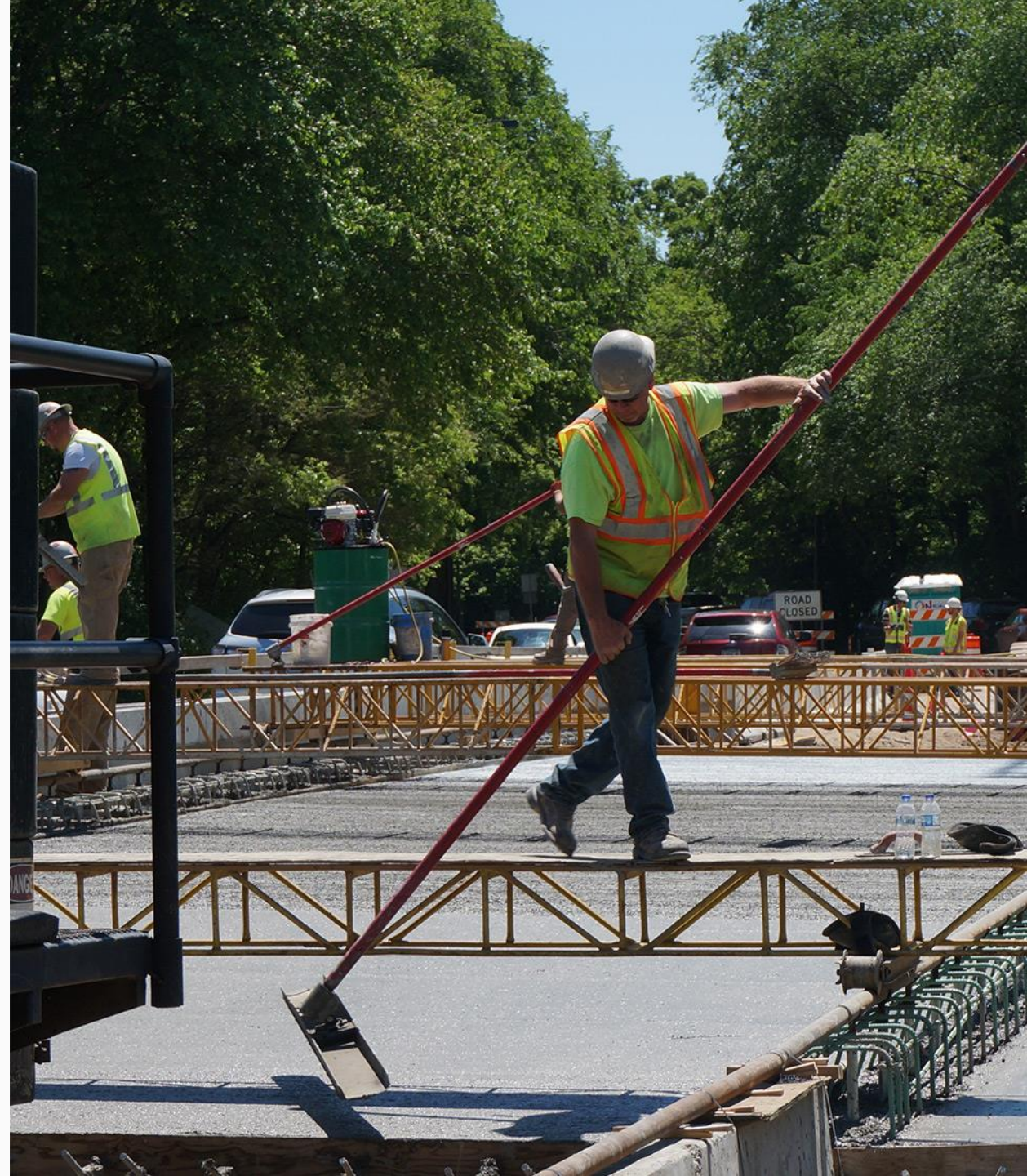
Bridge

- Bridge inspection
- Bridge and structure design
- Bridge and structure maintenance and operations



Construction

- Contract administration
- Materials testing and on-site inspection
- Construction topographical surveys
- Project oversight and management



Recently completed projects



Lake Street and Excelsior Boulevard
intersection improvements



Flying Cloud Drive reconstruction



Narrows Bridge reconstruction



Transportation Operations

Kristy Morter, Assistant Director

Leadership staff

Transportation Operations



Director
Chris Sagsveen



Assistant Director
Kristy Morter



**Transportation
Project Manager**
Troy Forcier



**Traffic Operations
Division Manager**
Maury Hooper



**Road Operations
Division Manager**
Andy Kraemer



**Administration and
Fleet Services
Manager**
Jay Baldwin



**Asset Management
Division Manager**
Open position



**Business
Manager**
Darcy Flink

Asset management

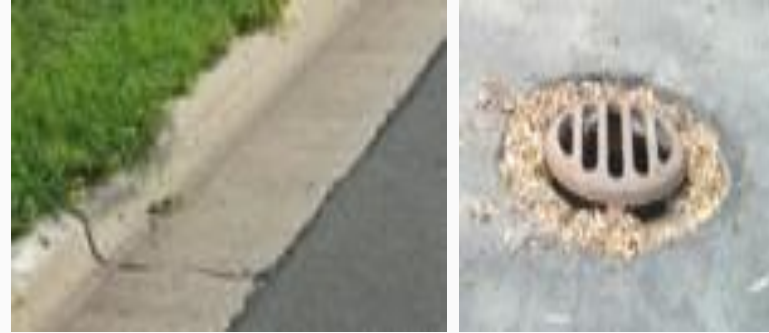
Vacant, Division Manager

- Oversight of transportation assets
- Use and management of right of way



Asset Management

A systematic approach to maintaining, upgrading and operating physical roadway assets cost-effectively throughout their life-cycle.





What physical assets do you see?

Right of way management

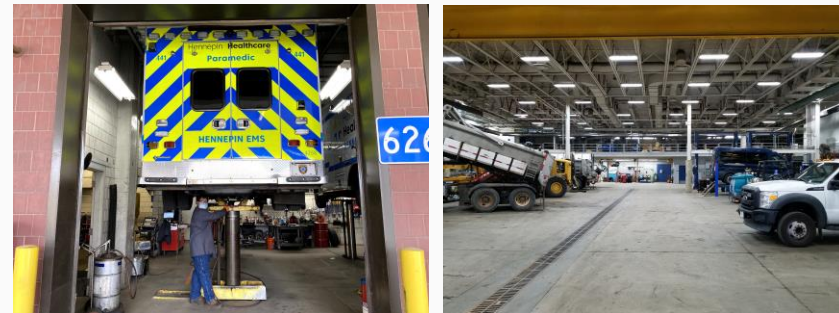
- Adopt A Highway
 - Volunteer program for roadside beautification
 - 247 roadside segments – all adopted currently
 - 30,000 pounds of garbage and debris collected annually
- Permitting



Fleet Services

Jay Baldwin, Sr. Administrative Manager

- Provide preventative maintenance, repair services and quality control on all 1,300 county-owned vehicles and equipment
- Purchase, manage and dispose of county- owned vehicles and equipment.
- Manage vehicle registration renewals for all of fleet
- Manage the county fuel program



Road Operations

Andy Kraemer, Division Manager

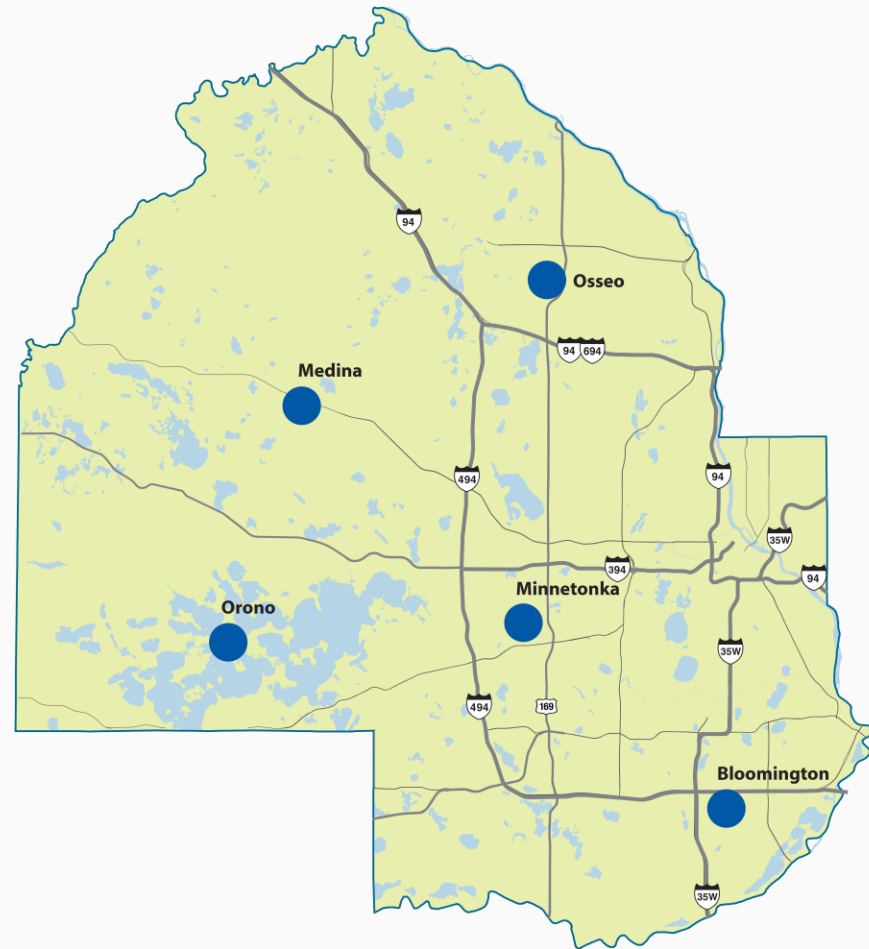
- Provide a high-quality, hazard-free system
- Prompt snow and ice control
- Ongoing road maintenance
 - Patching – including pothole repair
 - Mowing and weed control
 - Tree trimming and removal
 - Drainage - culverts, catch basins, ditches
 - Shoulders and clear zones
 - Slope repair



Snow and ice control deployment

Truck stations

- Bloomington
- Medina
- Minnetonka
- Orono
- Osseo



Traffic Operations

Maury Hooper, Division Manager

- Provide safe, efficient and reliable transportation through traffic control
- Use traffic engineering to ensure good flow, safe travel
- Manage traffic signals, signs, guardrails and pavement marking



Bike lane striping



Video detection



Rectangular rapid flashing beacon (RRFB)

Innovation and technology

Currently working on a technology update for the entire county system

- Focusing on delivering a countywide fiber optic backbone
- Goal is to provide a flexible, communication network ready for current and future technologies
- Positions Hennepin County to make progress on priorities such as climate action, digital divide, and disparity reduction initiatives



Eyes on the future



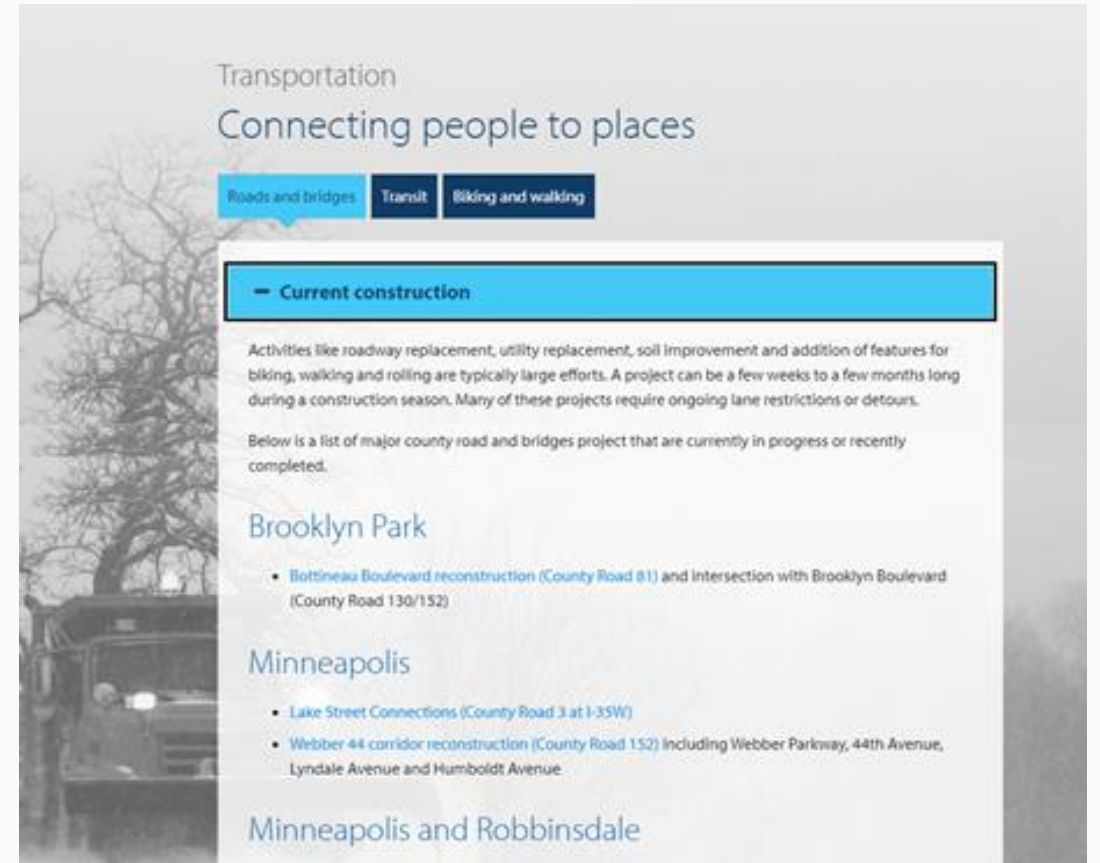
Connecting with Transportation

On the web

- Project overviews
- Report a problem online
- Transportation map
- Transit information
- Biking and walking information

Call transportation dispatch: 612-596-0299

- Potholes
- Broken traffic signals



Transportation
Connecting people to places

Roads and bridges Transit Biking and walking

— Current construction

Activities like roadway replacement, utility replacement, soil improvement and addition of features for biking, walking and rolling are typically large efforts. A project can be a few weeks to a few months long during a construction season. Many of these projects require ongoing lane restrictions or detours.

Below is a list of major county road and bridges project that are currently in progress or recently completed.

Brooklyn Park

- Bottineau Boulevard reconstruction (County Road 81) and Intersection with Brooklyn Boulevard (County Road 130/152)

Minneapolis

- Lake Street Connections (County Road 3 at I-35W)
- Webber 44 corridor reconstruction (County Road 152) including Webber Parkway, 44th Avenue, Lyndale Avenue and Humboldt Avenue

Minneapolis and Robbinsdale