

## Out-of-Home Placement & Screening Trends Q1 2018

### Total Out of Home Placements

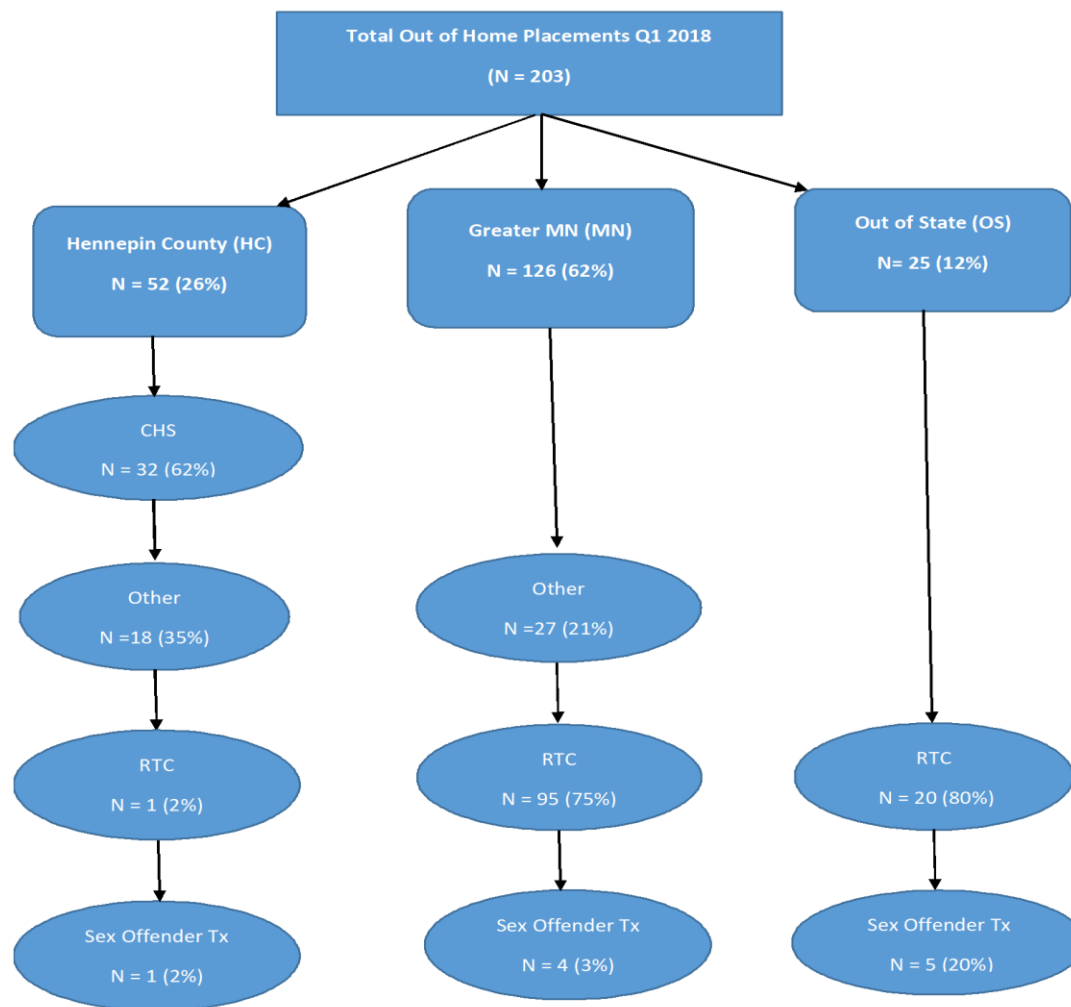
Figure 1<sup>1</sup> shows the breakout of out of home placements. Overall, there were 203 out of home placements in quarter one of 2018. Twenty-six percent were Hennepin County placements, 62% were Greater Minnesota placements, and 12% were out of state placements.

October 2018

Margaret Vohs  
Snr Planning Analyst

Danette Buskovick,  
Manager

**Figure 1. Total Out of Home Placements Q1 2018**



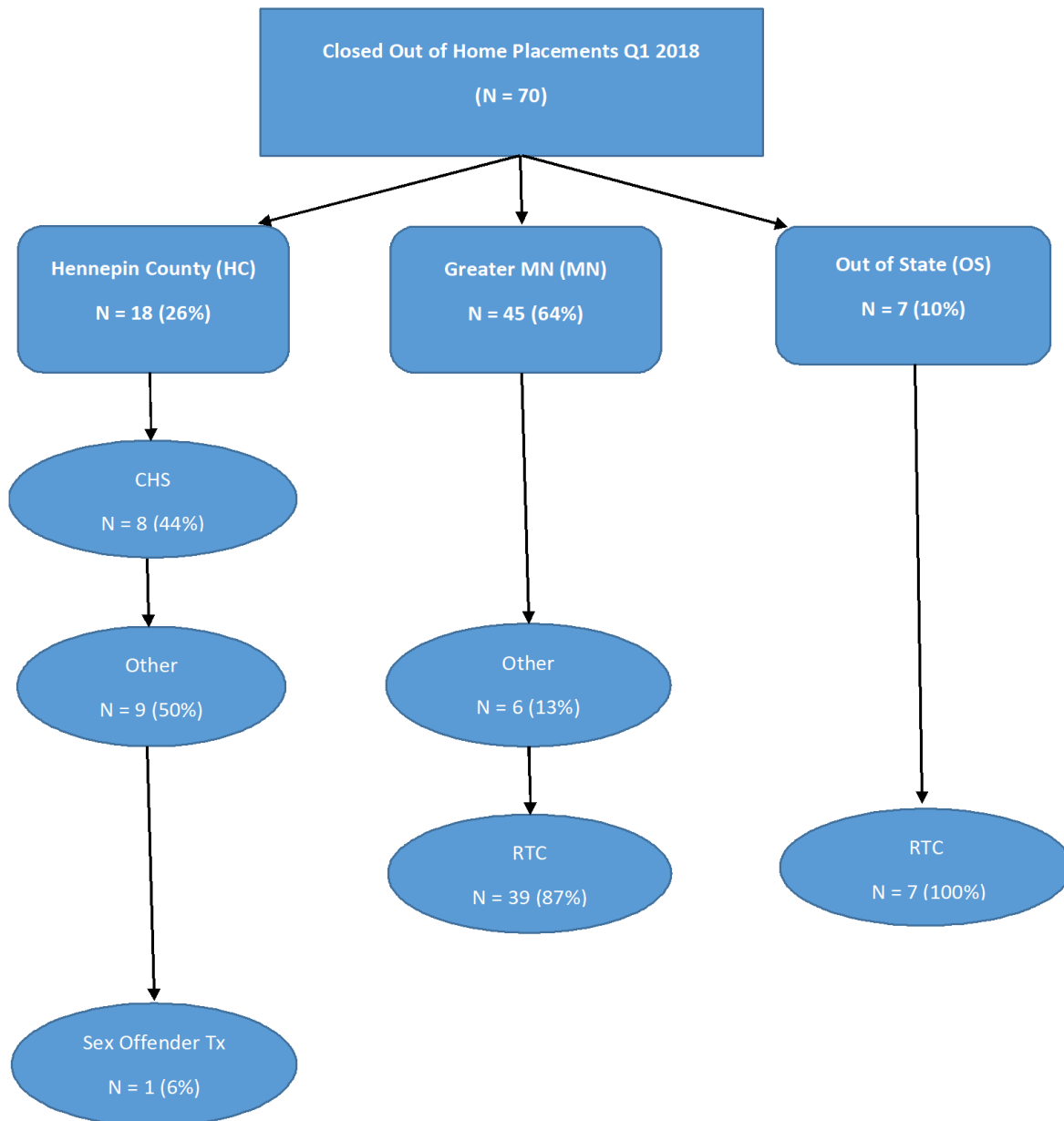
<sup>1</sup> Numbers represent number of out of home placements not number of youth. Youth may have more than one placement within the reporting period.

## Closed Placements

Figure 2<sup>2</sup> shows the breakout of closed out of home placements. Of the 203 total placements, 70 closed during quarter one of 2018.

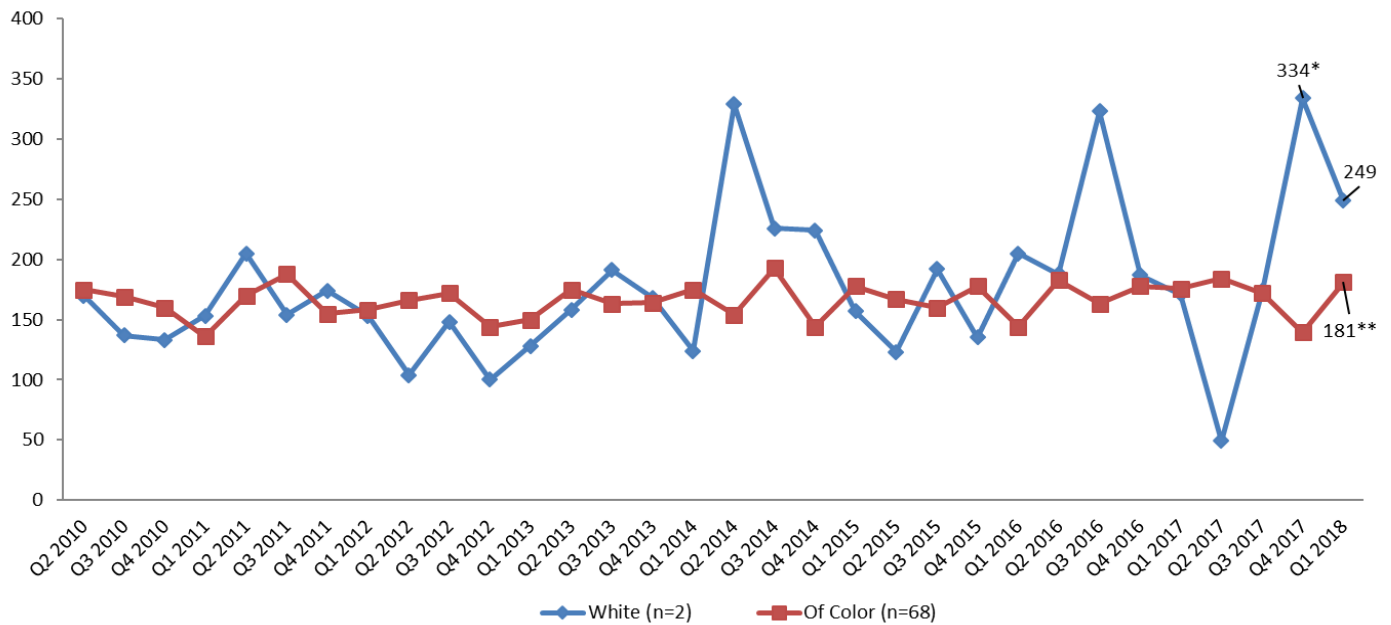
Twenty-six percent were HC placements, 64% were Greater Minnesota placements and 10% were out of state placements.

**Figure 2. Closed Out of Home Placements Q1 2018**



<sup>2</sup> Numbers represent number of closed out of home placements not number of youth. Youth may have more than one placement within the reporting period.

## Average length of stay for closed placements by race



\*In Q4 2017, median LOS is reported for white placements to account for artificial inflation due an outlier with a LOS of 1063 days.

\*\*In Q1 2018, median LOS is reported for of color placements to account for artificial inflation due to two outliers with a LOS above 900.

## Ave LOS for closed placements by race (detail)

	Q1 14	Q2 14	Q3 14	Q4 14	Q1 15	Q2 15	Q3 15	Q4 15	Q1 16	Q2 16	Q3 16	Q4 16	Q1 17	Q2 17	Q3 17	Q4 17	Q1 18
Amer Indian/ AK Native	164	124	172	70	149	149	140	208	120	133	177	283	288	172	104	47	79 n=1
Asian		200		147		388			239	893		205	216	176			
Black/ African American	174	174	190	152	185	161	152	156	144	174	147	173	174	197	191	131	224 n=51
Other Race	171	179	200	151	141	166	115	175	186	222	161	139	159	176	97	273	248 n=8
Two or more Races	186	143	205	141	181	165	237	327	165	200	228	193	97	128	157	187	169 n=8
White	124	329	226	224	157	123	192	135	205	188	323	187	171	49	174	459	249 n=2
Refused/ Unknown			190	114		182			2		372						
<b>Total Closed</b>	<b>99</b>	<b>89</b>	<b>96</b>	<b>105</b>	<b>96</b>	<b>164</b>	<b>162</b>	<b>175</b>	<b>148</b>	<b>183</b>	<b>173</b>	<b>178</b>	<b>175</b>	<b>177</b>	<b>172</b>	<b>167</b>	<b>219 n=70</b>

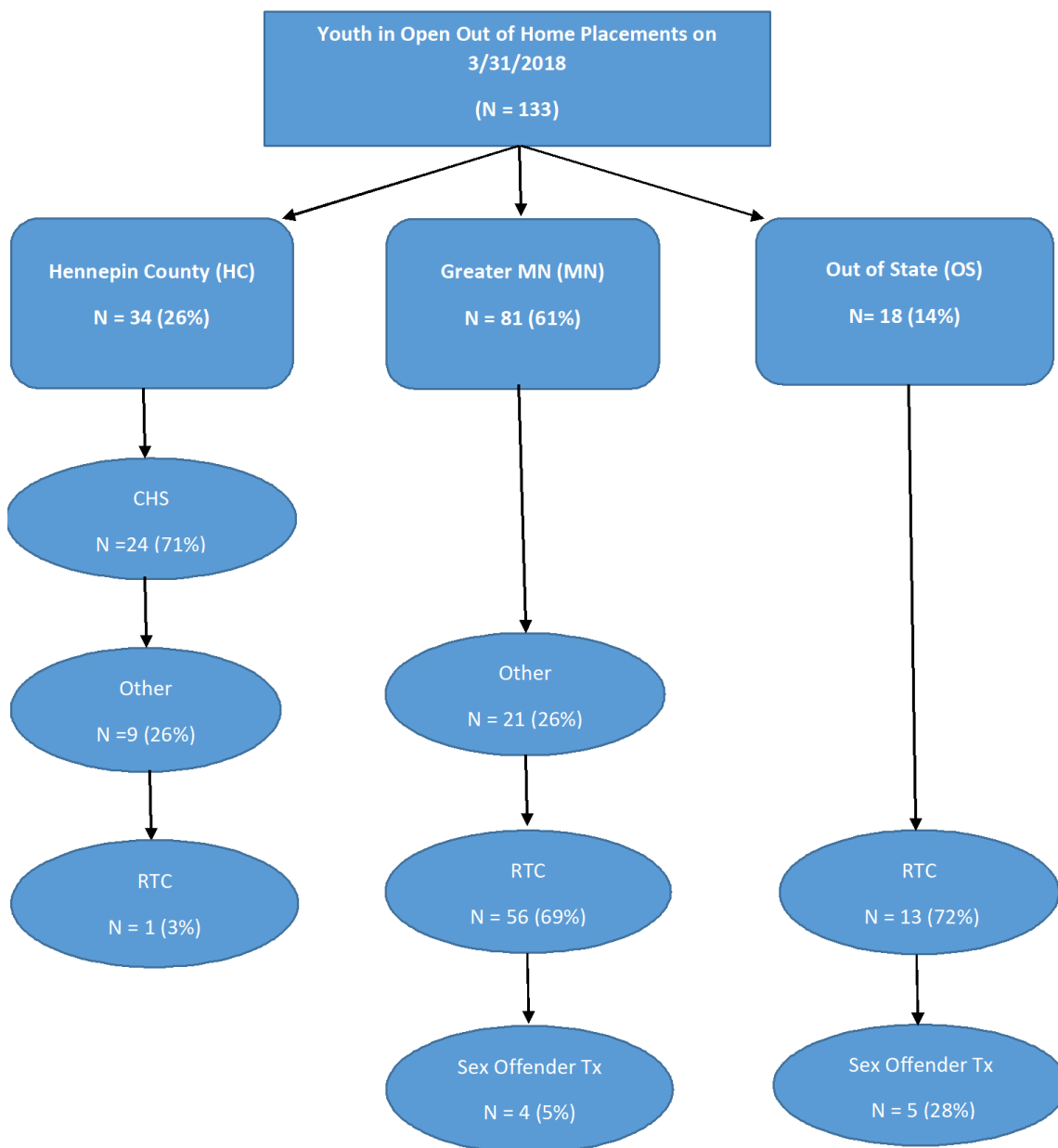
## Open Placements

There were 133 youth in placement on the last day of the quarter (March 31, 2018).

Twenty-six percent were youth in Hennepin County, 61% were youth in Greater Minnesota placements and 14% were in an out of state placement (see Figure 3).

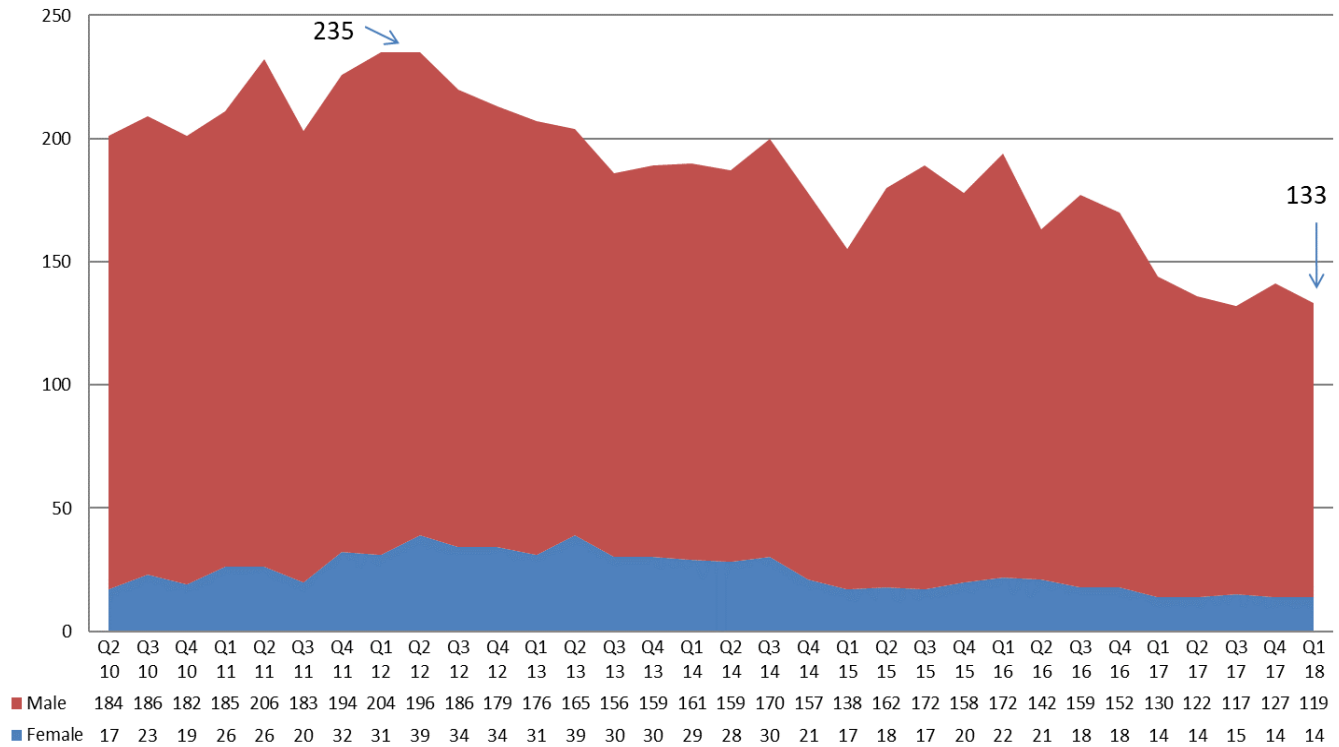
Most youth in Hennepin County on March 31<sup>st</sup> were at the CHS (71%). Slightly under 7 in 10 (69%) youth placed in Greater Minnesota were in an RTC, as were slightly less than three-quarters (72%) of youth placed outside of Minnesota.

**Figure 3. Open Out of Home Placements Q1 2018**



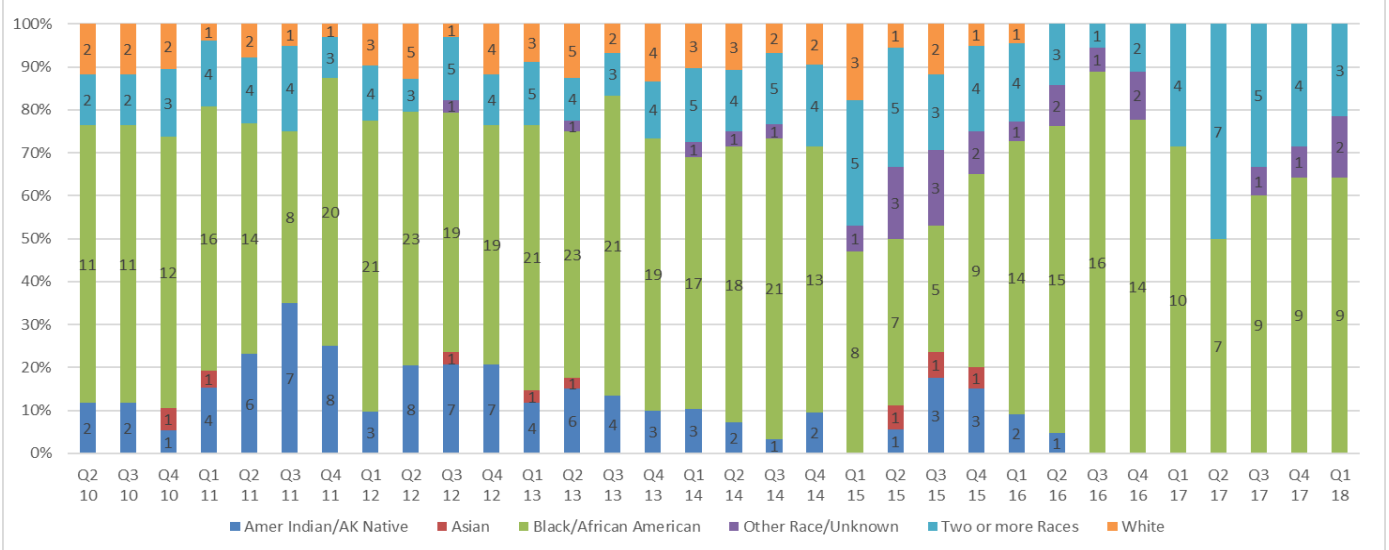
The chart below shows the number of male and female youth in out of home placement on the last day of the quarter (March 31, 2018).

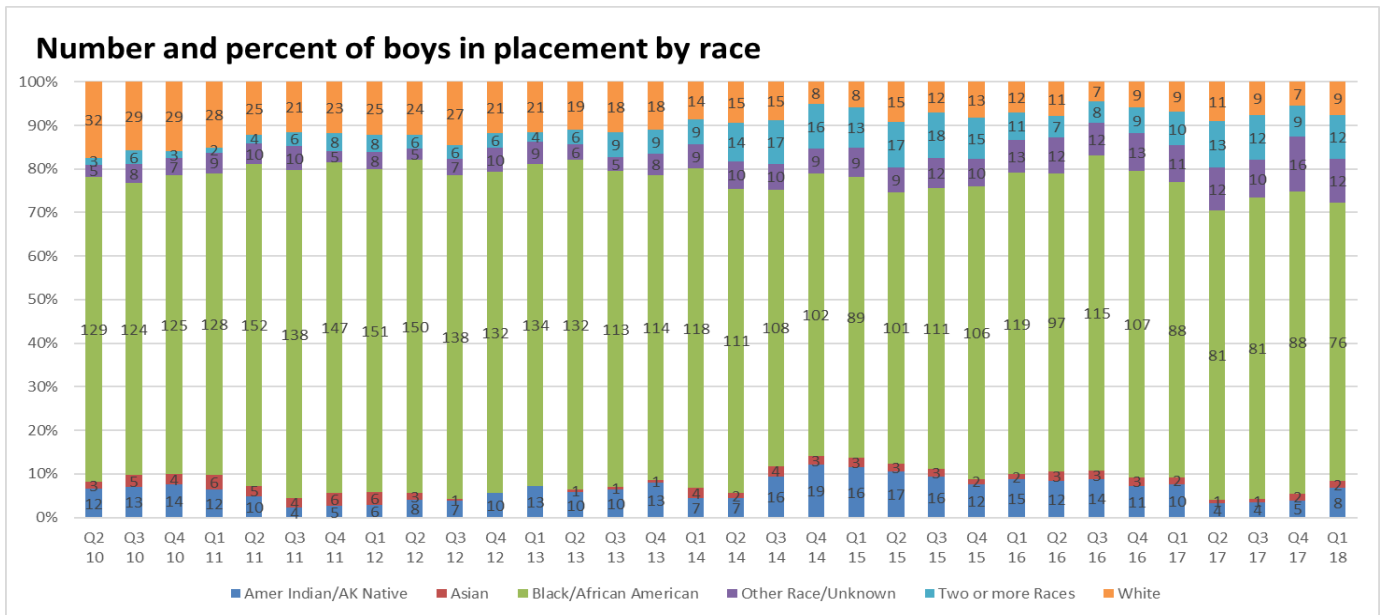
**Youth in out-of-home placement at quarter end by sex**



The following two charts show the race of male and female youth in placement on the last day of the quarter.

**Number and percent of girls in placement by race**





## Hennepin County

The table below details the number of youth open on the last day of the quarter for each placement location in Hennepin County broken out by placement type and by gender and race.

	Boys (n=28)		Girls (n=6)	
	Of Color	White	Of Color	White
<b>CHS</b>				
AFSHS Long Term	4	1	-	-
AFSHS Short Term	1	0	-	-
Focus RTC	-	-	2	0
Focus Short Term	-	-	1	0
STAMP	1	1	-	-
STAMP Plus	12	1	-	-
<b>Totals</b>	<b>18</b>	<b>3</b>	<b>3</b>	<b>0</b>
<b>Other Placements</b>				
HSPHD Foster	-	-	2	0
Jordan House	1	0	-	-
Kindred Family	1	0	-	-
St. Josephs Intake	0	1	-	-
VOA Foster Care	4	0	-	-
<b>Totals</b>	<b>6</b>	<b>1</b>	<b>2</b>	<b>0</b>
<b>Sex Offense Tx</b>				
<b>Totals</b>	<b>0</b>	<b>0</b>	<b>0</b>	<b>0</b>
<b>RTC</b>				
VOA Children's RTC	-	-	1	0
<b>Totals</b>	<b>0</b>	<b>0</b>	<b>1</b>	<b>0</b>
<b>Grand Totals</b>	<b>24</b>	<b>4</b>	<b>6</b>	<b>0</b>

## Greater Minnesota

The table below details the number of youth open on the last day of the quarter for each placement location in greater Minnesota broken out by placement type and by gender and race.

	Boys (n=74)		Girls (n=7)	
	Of Color	White	Of Color	White
<b>RTCs</b>				
Bar None ITC Evergreen	8	0	-	-
MNDOC Red Wing RTC	28	0	-	-
Woodland Hills RTC	19	1	-	-
<b>Totals</b>	<b>55</b>	<b>1</b>	<b>0</b>	<b>0</b>
<b>Other Placements</b>				
Bar None Stabil	2	0	-	-
Heartland Ranch	-	-	1	0
Maple Tree	2	0	-	-
North Homes Shltr-Eval	-	-	2	0
Other Co License	1	0	-	-
Passageways	-	-	1	0
RS Eden Reentry-West	1	0	-	-
St Joseph's Shelter	1	0	2	0
Village Ranch County	1	0	-	-
Village Ranch Girls	-	-	1	0
Village Ranch Tier 1	2	0	-	-
Woodland Hills SIL	4	0	-	-
<b>Totals</b>	<b>14</b>	<b>0</b>	<b>7</b>	<b>0</b>
<b>Sex Offense Tx</b>				
MLA New Trails GH	1	0	-	-
MLA RTC	1	1	-	-
Village Ranch Tier 2	1	0	-	-
<b>Totals</b>	<b>3</b>	<b>1</b>	<b>0</b>	<b>0</b>
<b>Grand Totals</b>	<b>72</b>	<b>2</b>	<b>7</b>	<b>0</b>

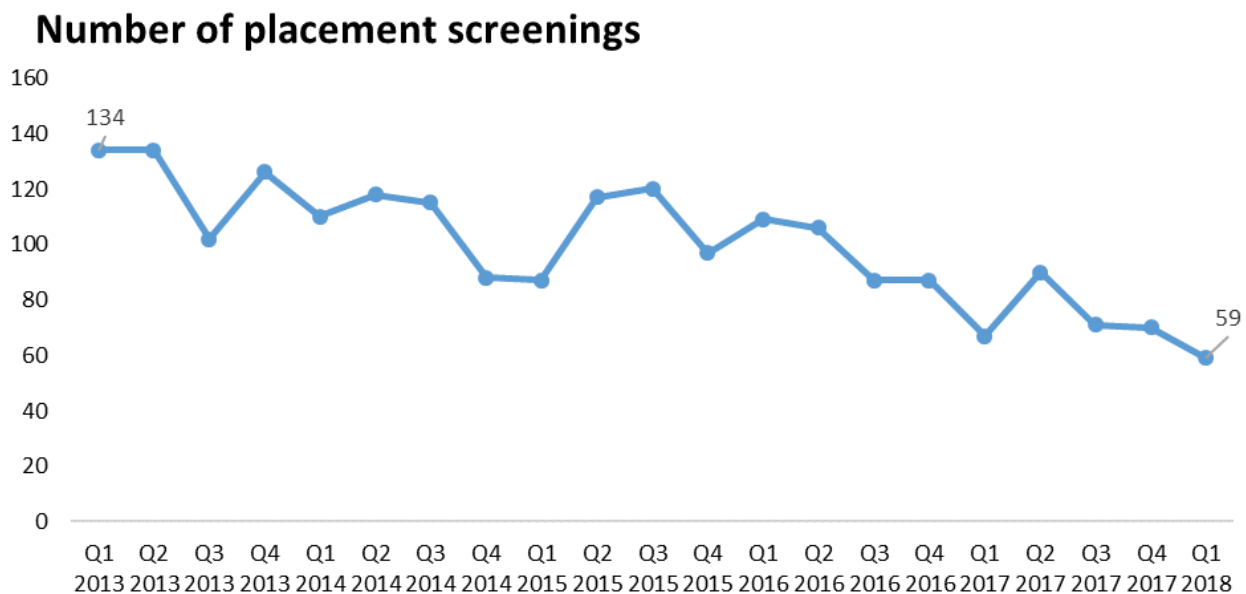
## Out of State

The table below details the number of youth open on the last day of the quarter for each placement location outside of Minnesota broken out by placement type and by gender and race.

	Boys (n=17)		Girls (n=1)	
	Of Color	White	Of Color	White
<b>RTCs</b>				
Clarinda Academy	3	0	1	0
Lakeside Academy	5	1	-	-
Woodward Academy RTC	3	0	-	-
<b>Totals</b>	<b>11</b>	<b>1</b>	<b>1</b>	<b>0</b>
<b>Sex Offense Tx</b>				
Lakeside Academy SOT	1	0	-	-
Woodward Academy SOT	2	2	-	-
<b>Totals</b>	<b>3</b>	<b>2</b>	<b>0</b>	<b>0</b>
<b>Grand Totals</b>	<b>14</b>	<b>3</b>	<b>1</b>	<b>0</b>

## Screening

Youth receive a placement screening to determine if an out-of-home placement is recommended<sup>3</sup>. The chart below shows the number of placement screenings conducted on youth by quarter. There is a 56% decrease in screenings between Q1 2013 and Q1 2018. Youth who are sent directly to placement as a court order are not included in the chart.



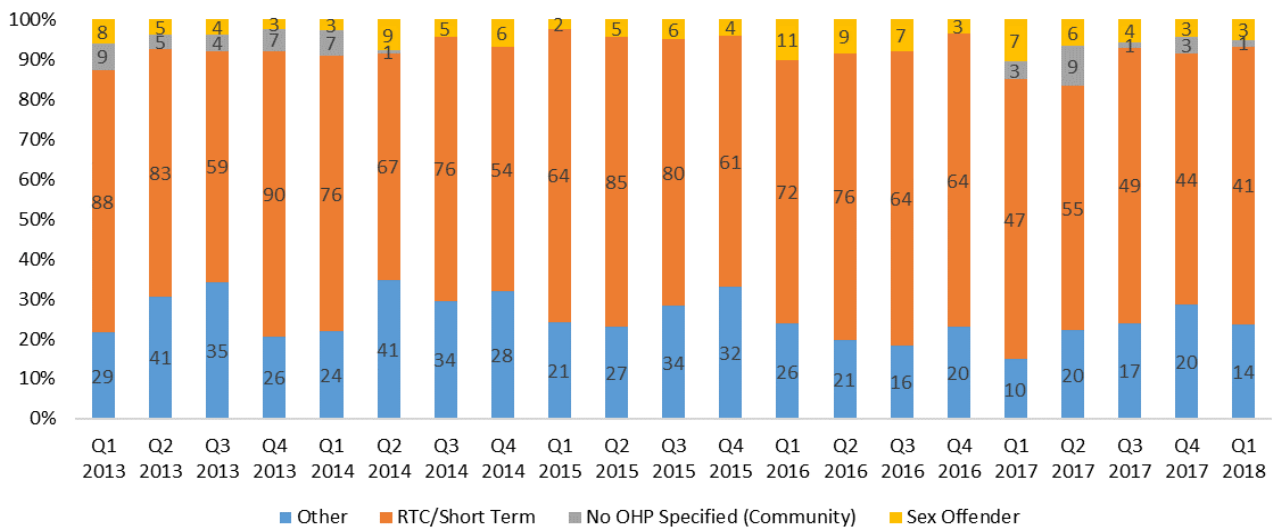
<sup>3</sup> At times a youth may be screened for more than one placement on a single day. These records have been counted as duplicates and have been removed for analysis.



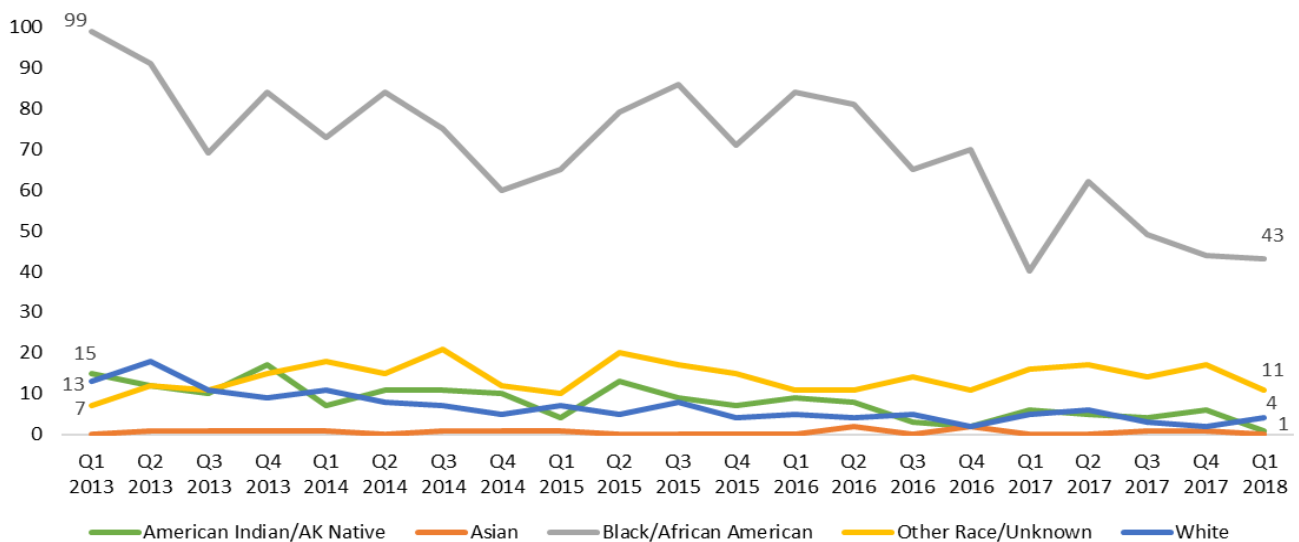
Placement screenings are conducted for a number of different reasons. Staff began recording the reason for conducting a placement screening in April 2017, though it is infrequently recorded. In Q1 2018, 45 (76%) placement screenings were missing data. Of the placement screenings that captured data, the reason was "investigation" for five (9%), "needs-based" for three (5%), "new charge" for three (5%), and "probation violation" for three (5%).

The following chart shows placement screenings by type. Here, the "Other" category includes Foster Homes, Group Homes, Shelters, Transition, Chemical Dependency, Mental Health and Evaluation. In some cases, the screening committee does not recommend an out-of-home placement and instead recommends a community-based service, indicated in the chart as "No OHP Specified (Community)".

**Placement screening type**



**Placement screenings by race**



## Placement screening type by race (detail)

		Q1 13	Q2 13	Q3 13	Q4 13	Q1 14	Q2 14	Q3 14	Q4 14	Q1 15	Q2 15	Q3 15	Q4 15	Q1 16	Q2 16	Q3 16	Q4 16	Q1 17	Q2 17	Q3 17	Q4 17	Q1 18
Other	Of color	23	32	32	24	22	36	31	27	21	25	32	31	24	19	16	20	10	19	16	20	14
	White	6	9	3	2	2	5	3	1	0	2	2	1	2	2	0	0	0	1	1	0	0
RTC /Short Term	Of color	83	75	54	84	68	65	72	50	57	83	74	58	69	74	60	63	44	53	47	42	39
	White	5	8	5	6	8	2	4	4	7	2	6	3	3	2	4	1	3	2	2	2	2
Community-Based	Of color	7	4	3	6	7	1	0	0	0	0	0	0	0	0	0	0	3	8	1	3	0
	White	2	1	1	1	0	0	0	0	0	0	0	0	0	0	0	0	0	1	0	0	1
Sex Offender	Of color	8	5	2	3	2	8	5	6	2	4	6	4	11	9	6	2	5	4	4	3	2
	White	0	0	2	0	1	1	0	0	0	1	0	0	0	0	1	1	2	2	0	0	1

## About this Report

The Department of Community Corrections and Rehabilitation has been tracking Correctional Out-of-Home Placements (COHP) for juvenile offenders since 2009. This report describes youth who were in out of home placement during the first quarter of 2018.

This report provides a breakdown of the youth in open and closed placements. Placements open on the last day of the quarter (i.e., March 31, 2018) are broken out by race and gender. Average length of stay is broken out by race and reported for closed placements. Placement Type is classified in several ways. Overall, placements are organized by Hennepin County (HC), Greater Minnesota (MN), and Out of State (OS). Within those categories, placements are broken out by Residential Treatment Center (RTC) placements, Sex Offender (SO) placements, County Home School (CHS- HC only) placements, and other placements. Other placements include: Foster Homes, Shelters, Transition, Group Homes and Evaluation. Placement screening types are similarly broken out by RTC placements, Sex Offender placements, Community-Based placements and other placements. Other placements include: Foster Homes, Shelters, Transition, Group Homes and Evaluation.

Data is pulled 45 days after each quarter ends from the juvenile case management information system (MAIn) using the COHP Population Report.