



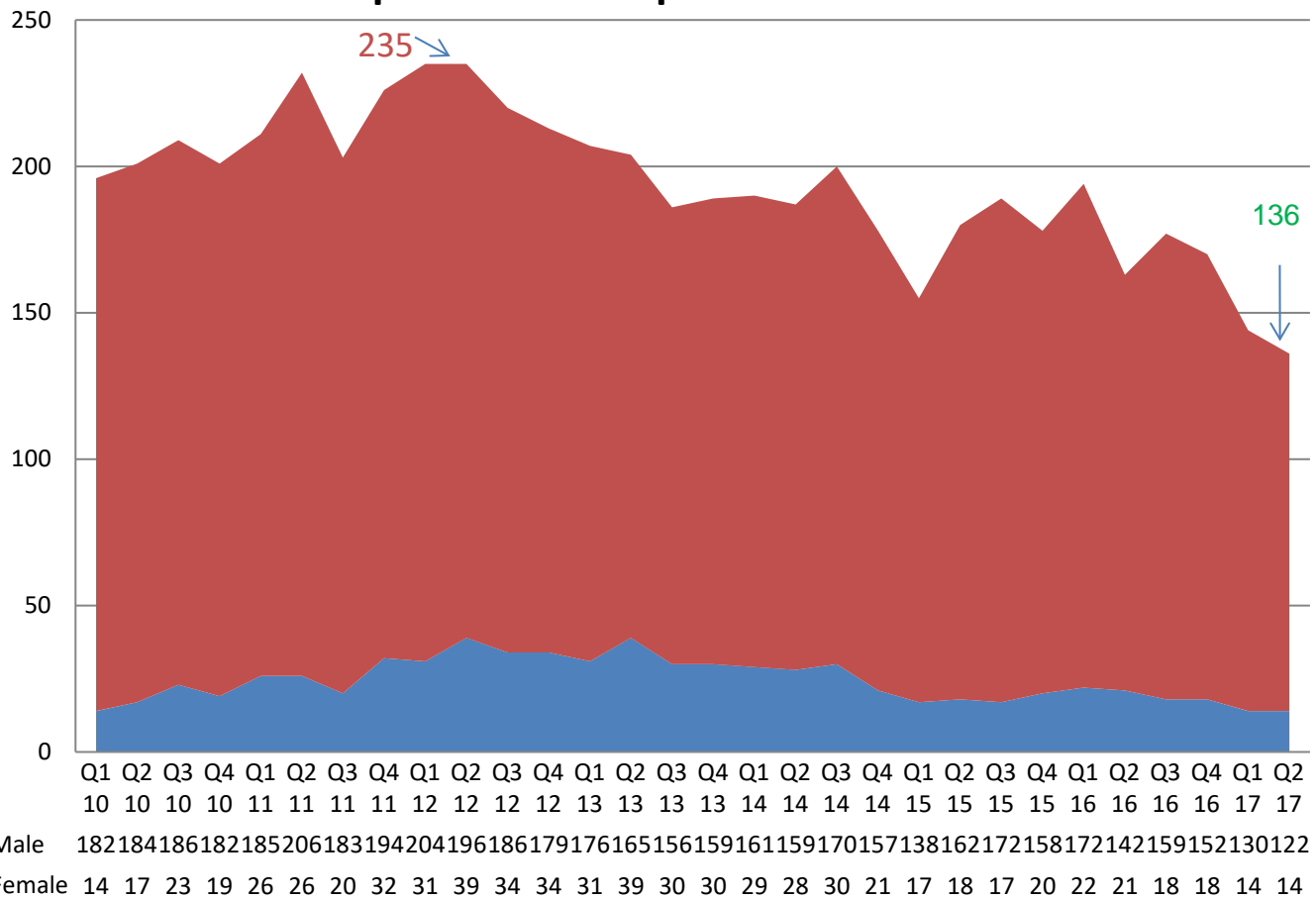
Correctional Out-of-Home Placement Trends Q2 2017

About this Report

The Department of Community Corrections and Rehabilitation has been tracking Correctional Out-of-Home Placements (COHP) for juvenile offenders since 2009. This report provides a breakdown of the youth in placement by gender, race/ethnicity, offense type, and average length of stay. It also details the number of placements in Residential Treatment Centers (RTC) and short-term placements. The data is pulled from the juvenile case management information system (MAIn) using the COHP Population Report.

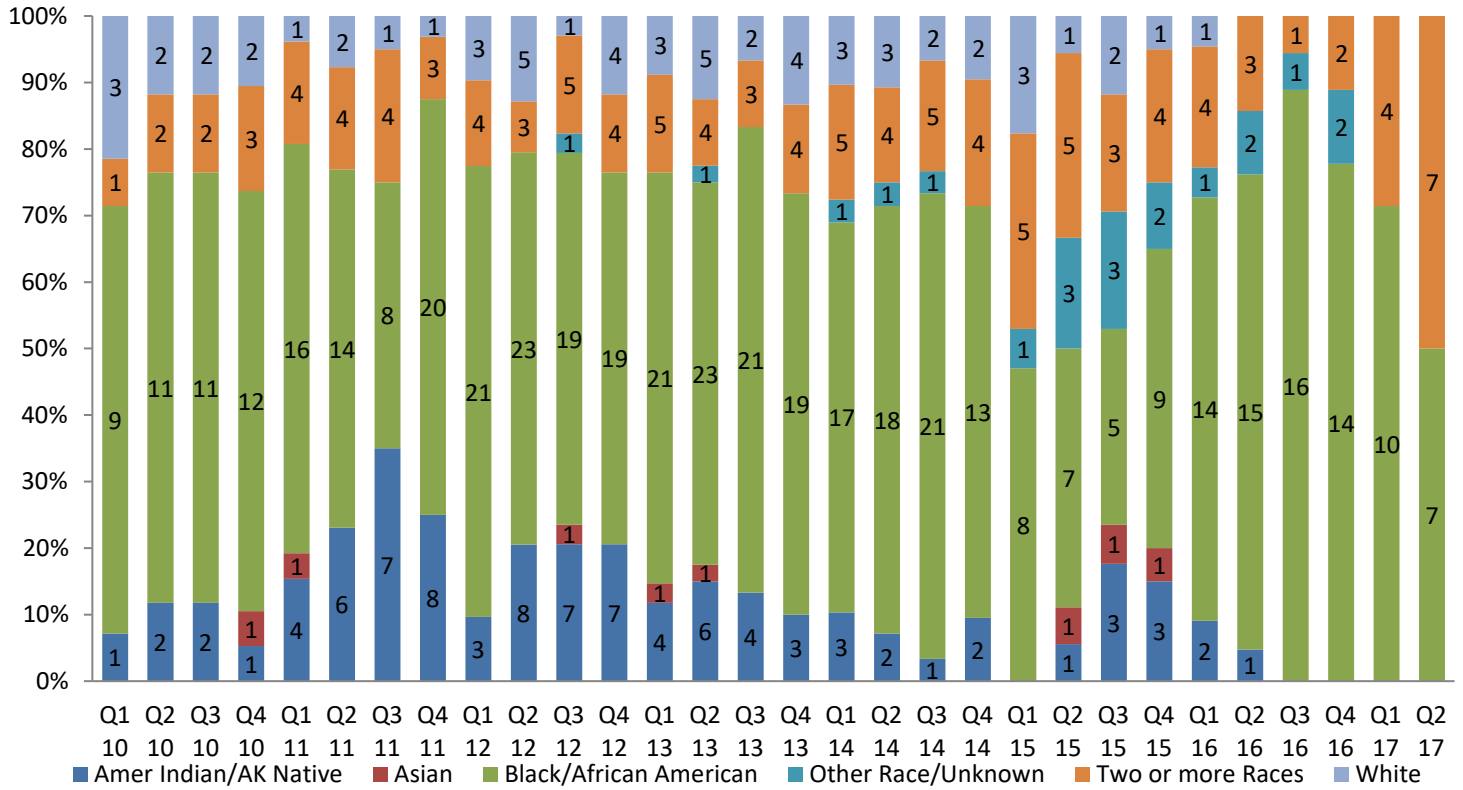
Demographic Trends

Youth in out-of-home placement at quarter end* sex



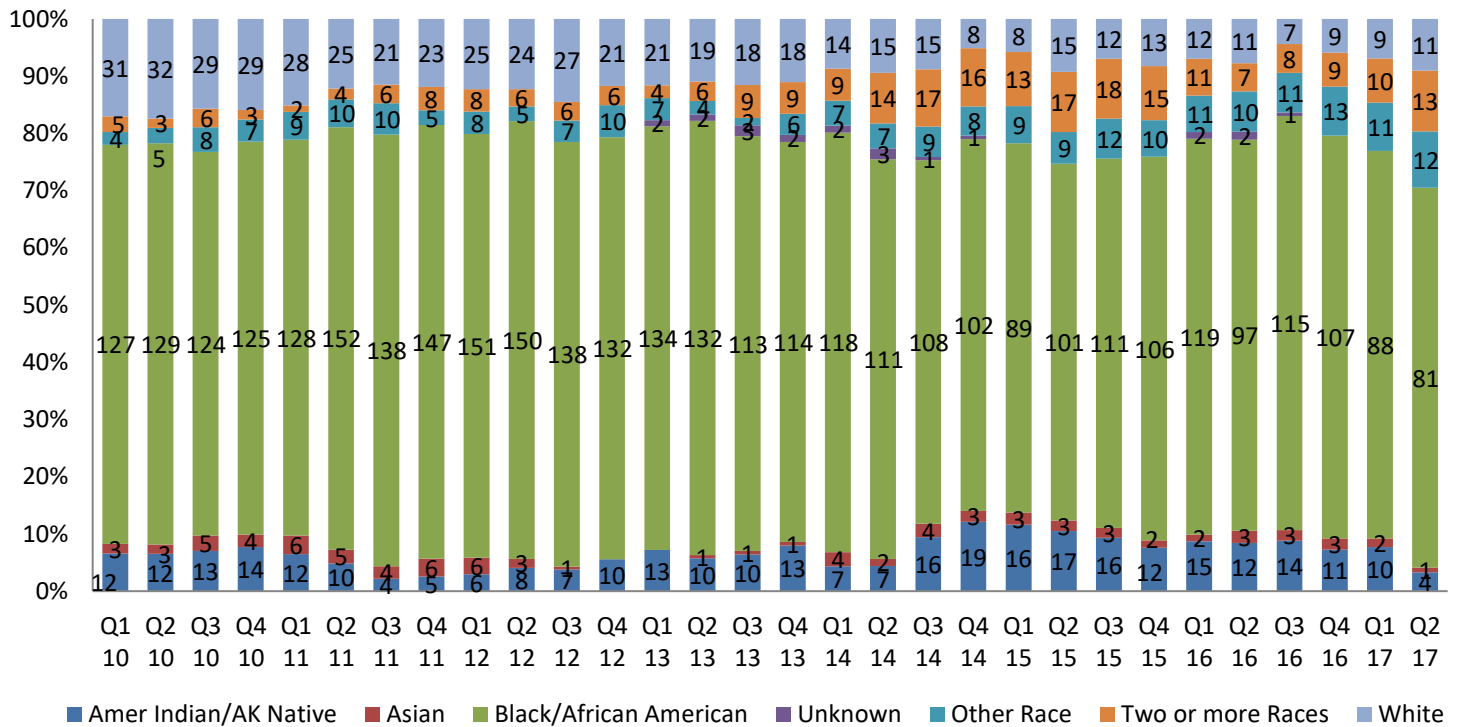
* Quarter end was June 30, 2017

Number and percent of girls in placement by race*



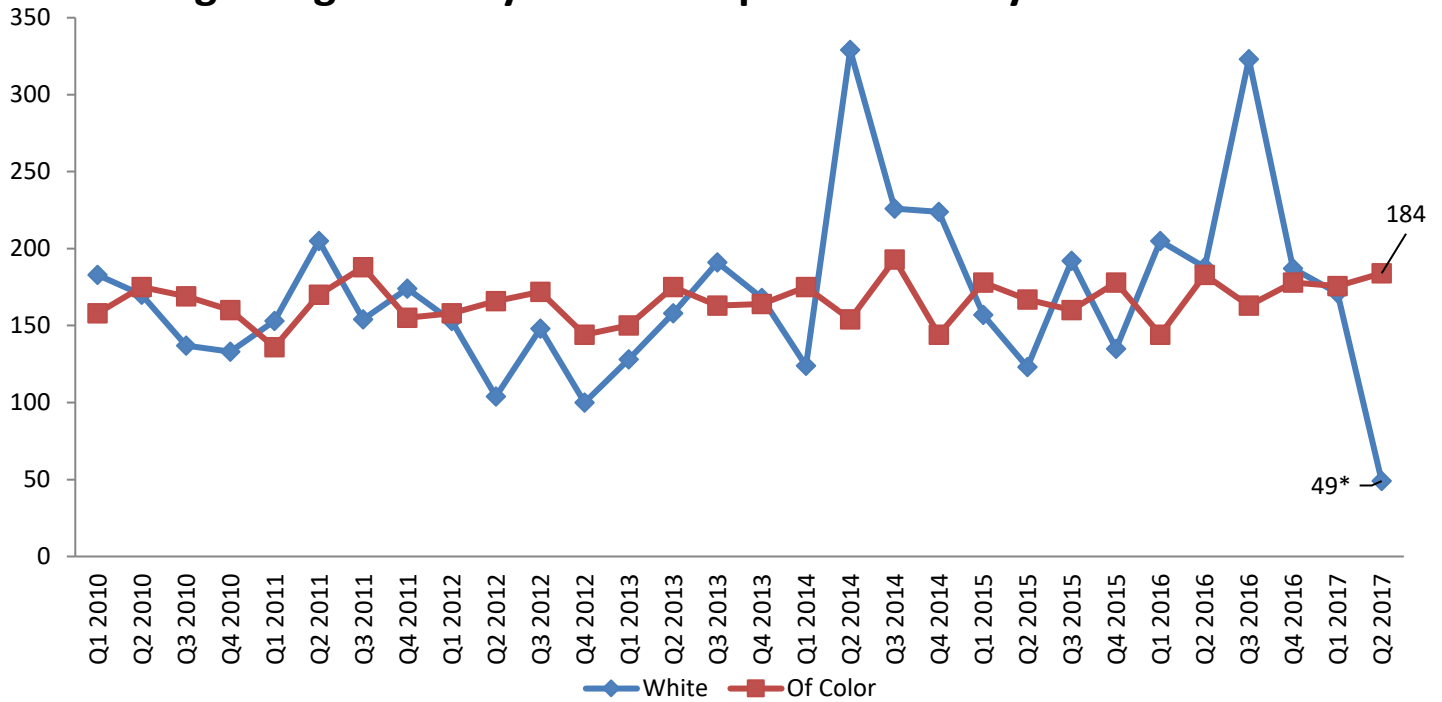
*Placements reflect numbers at quarter end, June 30, 2017.

Number and percent of boys in placement by race*



*Placements reflect numbers at quarter end, June 30, 2017.

Average length of stay for closed placements by race

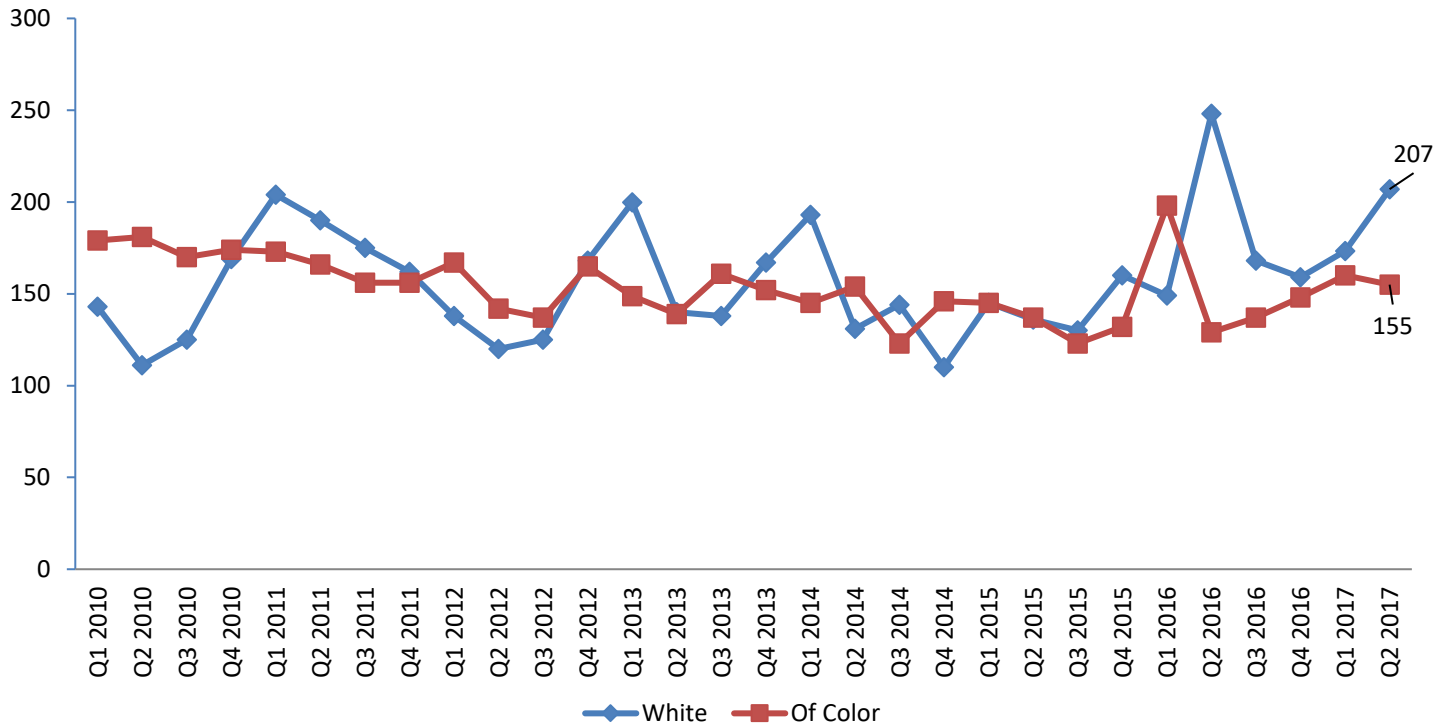


* Average length of stay (los) for white youth is based on 4 kids (3 in shelter), which is why los is low.

Average length of stay for closed placements by race (detail)

	Q2 13	Q3 13	Q4 13	Q1 14	Q2 14	Q3 14	Q4 14	Q1 15	Q2 15	Q3 15	Q4 15	Q1 16	Q2 16	Q3 16	Q4 16	Q1 17	Q2 17
Amer Indian/ AK Native	114	163	142	164	124	172	70	149	149	140	208	120	133	177	283	288	172
Asian		205			200		147		388			239	893		205	216	176
Black/ African American	187	156	181	174	174	190	152	185	161	152	156	144	174	147	173	174	197
N. Hawaii/ Pacif Islander																	
Other Race	135	233	17	171	179	200	151	141	166	115	175	186	222	161	139	159	176
Two or more Races	69	219	54	186	143	205	141	181	165	237	327	165	200	228	193	97	128
White	158	191	168	124	329	226	224	157	123	192	135	205	188	323	187	171	49
Refused/ Unknown	162		125			190	114		182			2		372			
Total Closed	122	104	96	99	89	96	105	96	164	162	175	148	183	173	178	175	177

Current length of stay for open placements by race



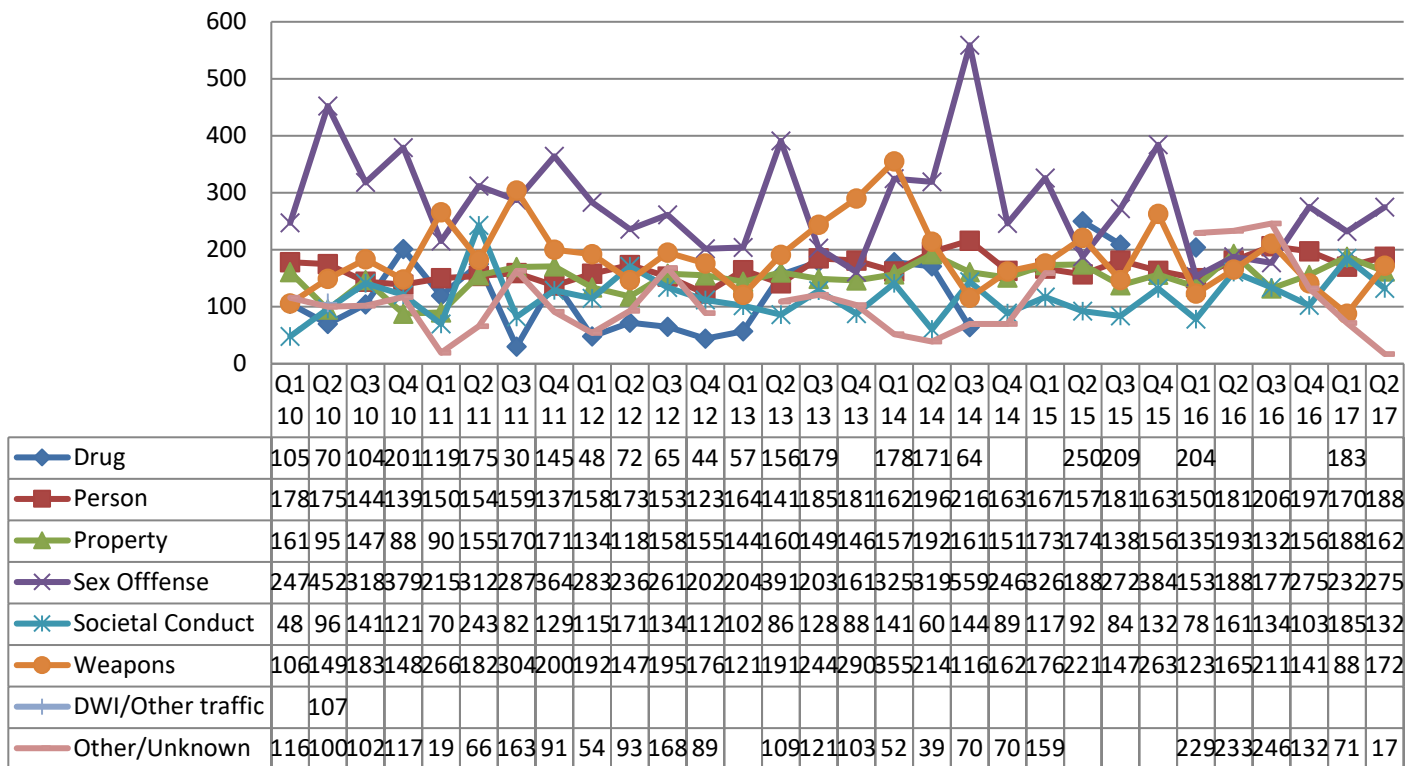
Current length of stay for open placements by race* (detail)

	Q2 13	Q3 13	Q4 13	Q1 14	Q2 14	Q3 14	Q4 14	Q1 15	Q2 15	Q3 15	Q4 15	Q1 16	Q2 16	Q3 16	Q4 16	Q1 17	Q2 17
Amer Indian/ AK Native	137	145	118	86	123	84	130	170	161	142	145	169	179	205	266	167	63
Asian	100	161	253	115	137	209	303	393	186	278	406	596	141	233	268	400	756**
Black/African American	134	164	154	144	147	114	143	131	132	116	117	131	114	122	133	148	148
N. Hawaii/ Pacif Islander									116	208							
Other Race	179	26	53	97	167	113	180	129	77	102	115	188	113	152	139	171	181
Two or more Races	227	178	219	222	205	113	152	166	161	181	167	197	216	187	183	194	160
White	140	138	167	193	131	144	110	144	135	123	160	198	248	168	159	173	207
Refused/ Unknown	63	106	85	175	200	82	29	119	102	194	286	168	259	238			

*Current length of stay for open placements reports the average number of days in placement as of the end of the quarter for youth still in residence at the programs.

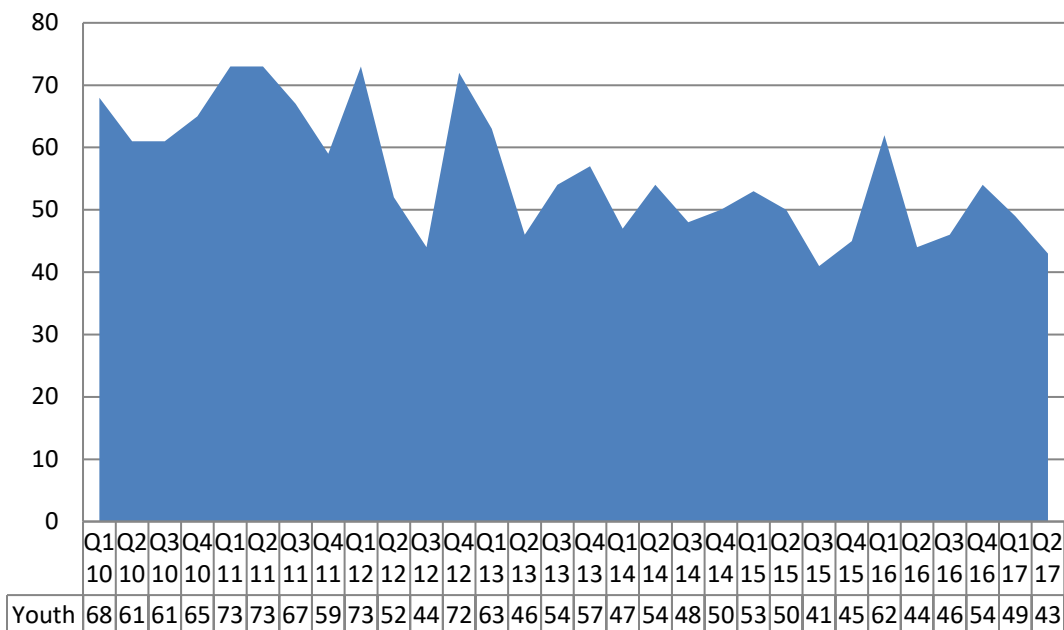
** Current length of stay is based on 1 Asian youth.

Average Length of stay for closed placements by offense type*

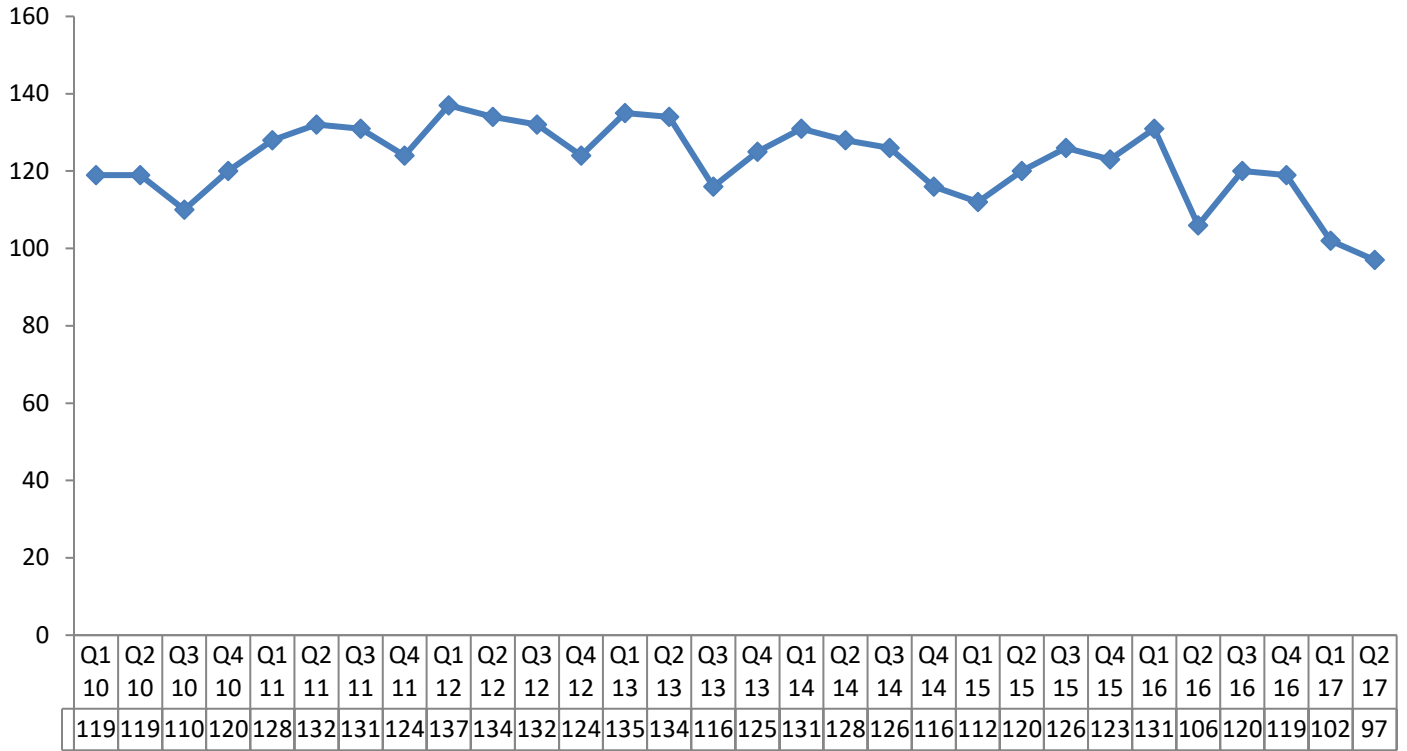


* Offense Type is not necessarily the offense that triggered the OHP, but it what is identified as primary offense in MAIn.

Youth in open placements at quarter end for more than 180 days



Youth in RTC placements at quarter end Q1 2010 - Q2 2017

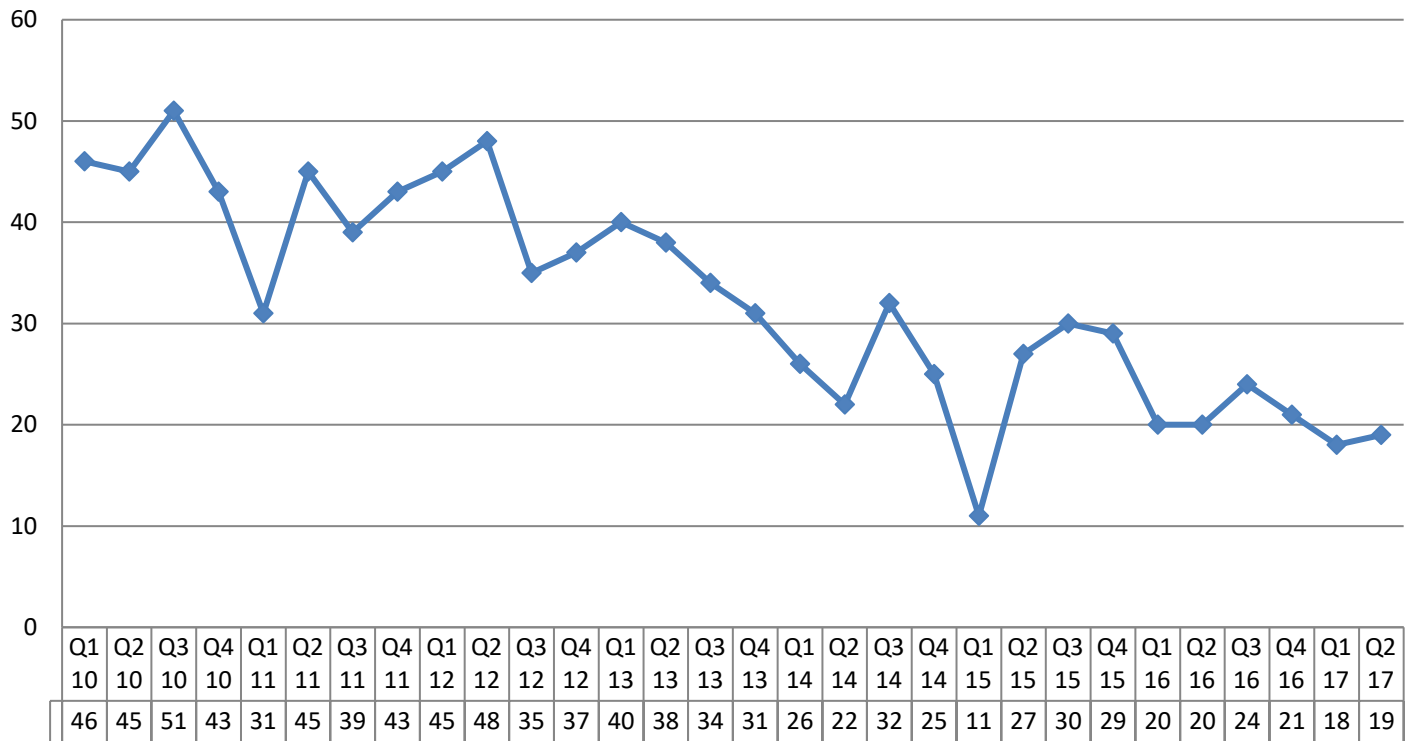


Number of youth in RTC placement on the last day of each month by location July 2016 through June 2017

Listed by number of youth in placement in descending order

Placement Location	Jul 16	Aug 16	Sep 16	Oct 16	Nov 16	Dec 16	Jan 17	Feb 17	Mar 17	Apr 17	May 17	Jun 17
Woodland Hills RTC	32	32	35	32	36	37	35	34	31	33	33	30
MNDOC Red Wing RTC	37	38	41	42	41	39	37	36	32	32	30	28
Bar None ITC - Evergreen	8	9	12	8	10	10	8	9	9	9	7	8
CHS AFSHS - L	8	9	11	10	9	7	6	8	9	9	11	8
Woodward Academy SOT										2	4	4
Benchmark	2	2	4	4	4	4	4	4	4	4	4	3
CHS Focus RTC	9	10	7	7	8	8	6	4	4	5	3	3
MLA RTC	5	6	4	4	2	5	5	5	4	3	3	3
MNDOC Dakota County	1	1	1	3	3	2	1	1		1	2	2
Alpha Human Services								1	1	1	1	1
CHS AFSHS - S						1	1	1		1	1	1
Clarinda Academy								1	1	1	1	1
Eau Claire RTC	1	1										1
Gerard Academy	1	1	1	1	1			1	1	1	1	1
Mingus Mountain								1	1	1	1	1
Woodland Hills - MH	1	1	1	1	2	2	1	1	1	1	1	1
Woodward Academy RTC					1	1	2	2	2		1	1
Bar None RTC-Stepping	2	2	1	2	2	2	2	2	1	1		
MLA New Trails GH	2	1	1	1	1	1	1	1	1	1	1	1
Total	111	113	120	115	120	119	109	112	102	111	105	97

Youth in Short Term placements at quarter end, Q1 2010 - Q2 2017



Number of youth in Short-Term placements on the last day of each month by location July 2016 through June 2017

Listed by number of youth in placement in descending order

Placement Location	Jul 16	Aug 16	Sep 16	Oct 16	Nov 16	Dec 16	Jan 17	Feb 17	Mar 17	Apr 17	May 17	Jun 17
CHS STAMP Plus	17	19	20	21	21	17	14	14	15	14	14	14
CHS STAMP	3	1	2	1	2	4	5	6	3	3	4	4
CHS Focus Short Term												1
Dakota Gender Specific	1	2	2	2	2							
Total	21	22	24	24	25	21	19	20	18	17	18	19

Jessica Wildermuth, Senior Planning Analyst, Policy, Planning and Evaluation
 Danette Buskovich, Manager, Policy, Planning and Evaluation