



## 2015 Snapshot

### Key facts and accomplishments

# HENNEPIN COUNTY COMMUNITYWORKS INITIATIVE

Since 1994, we've been working with partners to build long-term value in communities. Our quality investments include housing, redevelopment, transportation, parks and trails, public spaces and environmental restoration.



# 2015 PROJECT HIGHLIGHTS

50



businesses helped create a Minnehaha Avenue streetscape plan to foster economic vitality along this commercial corridor [MINNEHAHA-HIAWATHA]

42

ongoing planning and development of walkable, bikable places primed for light rail transit and new and stronger businesses [SOUTHWEST]

affordable homes sized for working families built on the Midtown Greenway at the Greenway Heights development [MIDTOWN]



STIMULATE ECONOMIC DEVELOPMENT AND JOB GROWTH

Southwest



2.2

miles of a major corridor redesigned to be more attractive, safer for all, and to encourage development at key intersections [LOWRY AVE NE]



LEAD COLLABORATIVE PLANNING AND IMPLEMENTATION

Penn Ave



20

strategies to enhance livability and stimulate economic development along an urban corridor [PENN AVE]

8

rainwater management best practices recommended to treat and reduce runoff into the Mississippi River [LOWRY AVE NE]



INNOVATE AND ADVANCE SUSTAINABILITY

Lowry Ave NE



200

plantings for a landscape restoration and a shade tree canopy [MIDTOWN, MINNEHAHA-HIAWATHA]

3000 +

attendees at events that Community Works supported as a partner, designed to strengthen a commercial corridor and showcase ideas for future public spaces and activities [MIDTOWN, MINNEHAHA-HIAWATHA, PENN AVE]



STRENGTHEN AND CONNECT PLACES AND PEOPLE

78

percent of surveyed bikers and walkers responded positively to design experiments to improve wayfinding on and around the Midtown Greenway [MIDTOWN]

Midtown



11

station area plans completed along the proposed METRO Blue Line Extension [Bottineau LRT]



ENHANCE THE TAX BASE

Bottineau LRT



1.4

acres of prime property acquired to facilitate commercial development near a future LRT station [SHADY OAK]

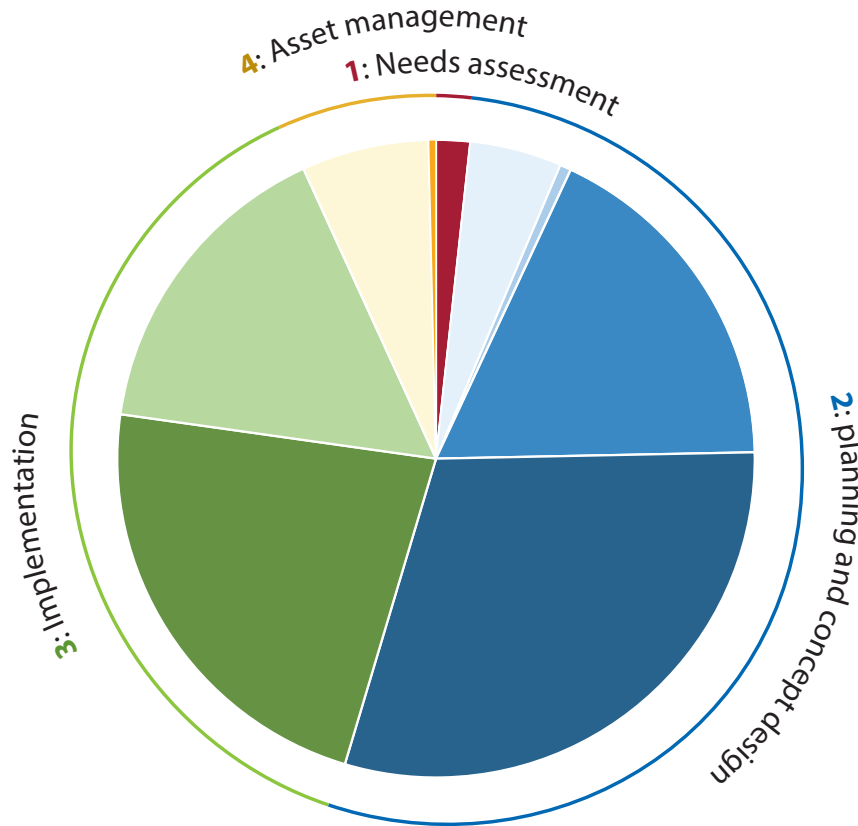
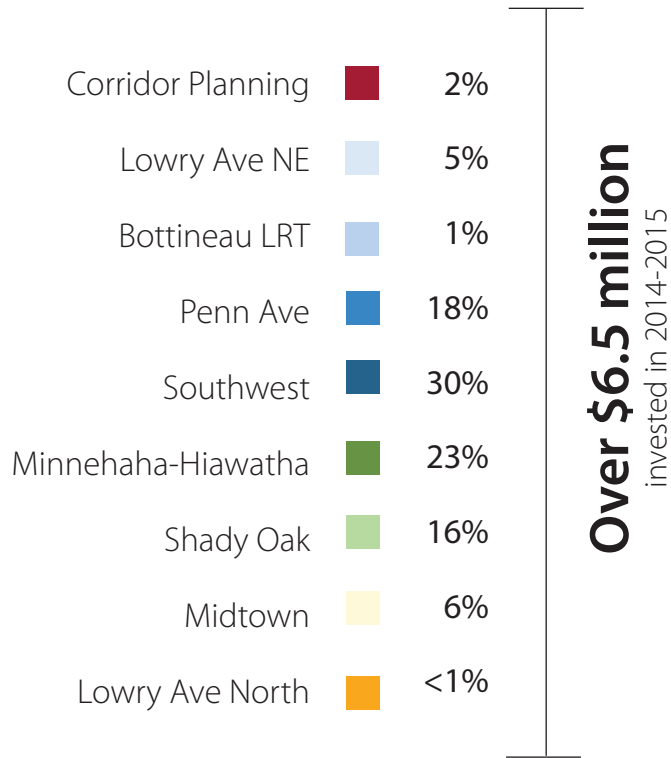
2.5

acres of publicly owned land along Lowry Avenue North now slated for an array of new housing options [LOWRY AVE NORTH]



HENNEPIN COUNTY  
COMMUNITYWORKS  
INITIATIVE

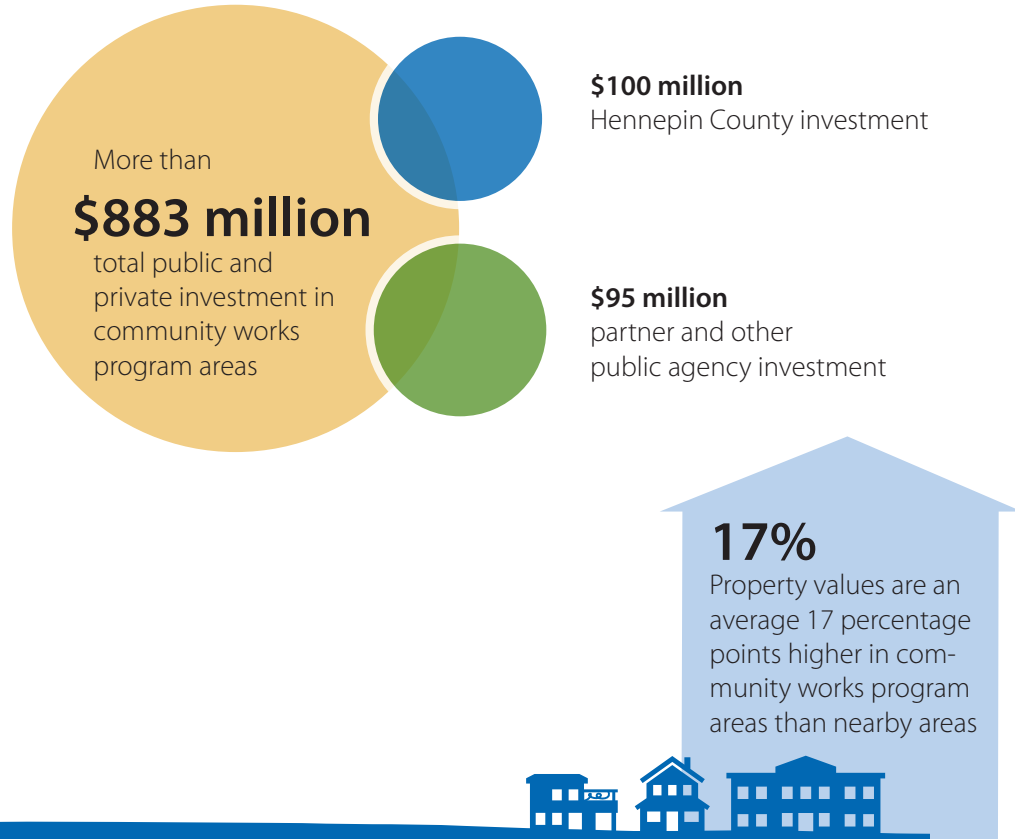
# About the Community Works programs



## Program phases

- 1: Needs assessment**  
Identify opportunities, scope and feasibility
- 2: Planning and concept design**  
Community engagement, develop vision and recommendations
- 3: Implementation**  
Infrastructure, economic development, long-term project implementation
- 4: Asset management**  
Strategies for ongoing maintenance, evaluation and program closeout

# A 20-year return on investment



## Goals and partnerships

Our innovations and investments help the county achieve 5 goals:

- Enhance the tax base
- Stimulate economic development and job growth
- Strengthen and connect places and people
- Innovate and advance sustainability
- Lead collaborative planning and implementation

Partnerships are essential to our success.

In 2015 we worked with:

- 20 advocacy and nonprofit organizations
- 45 businesses
- 24 cities and other government agencies
- 11 education and health organizations
- 19 neighborhood groups

Find out more

[hennepin.us/communityworks](http://hennepin.us/communityworks)

