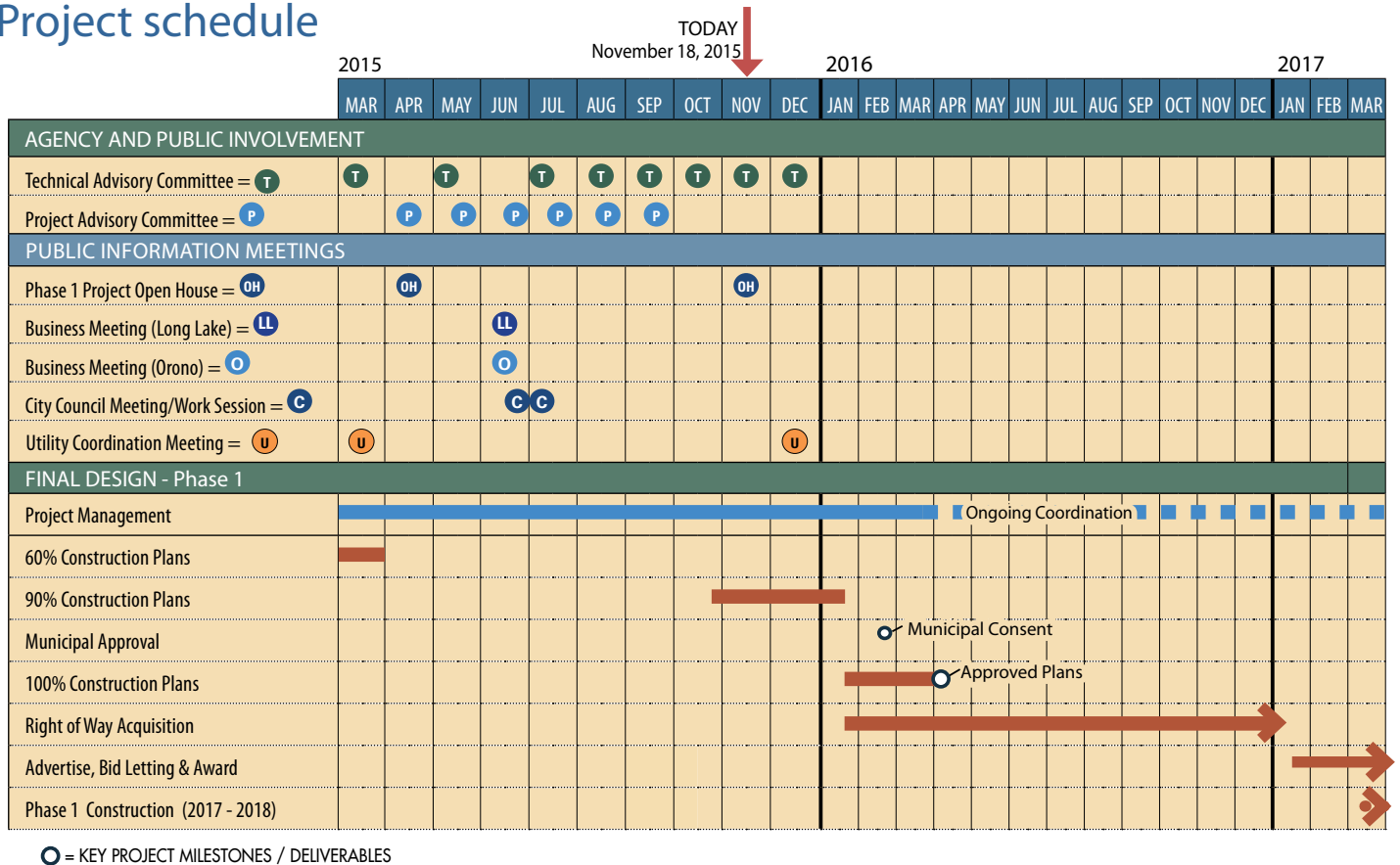


# WAYZATA BOULEVARD (COUNTY ROAD 112) RECONSTRUCTION



## PHASE 1 COMMUNITY OPEN HOUSE

### Project schedule



### Project status

Hennepin County is currently in the process of developing detailed design plans for roadway and streetscape enhancement elements for this first phase of work on Wayzata Boulevard (County Road 112). The limits of this work are from Willow Drive to Wolf Pointe Trail. The final design is scheduled for completion in spring of 2016. Right of way and easements will be acquired in 2016 to allow construction to begin in 2017.

Project partners include the cities of Long Lake and Orono.

### Open house to do list:

- Sign in
- Visit with project staff and design team
- Learn about Phase 1 project process and schedule
- Visit Phase 1 project displays
  - Corridor improvements
  - Streetscape enhancement concepts
  - Construction staging concepts
- Review Phase 1 detour layout
- Review Long Lake shoreline cross section

# Phase 1 Design Treatments



## Long Lake Shoreline Restoration

Includes concrete curb and gutter, riprap and chain link fence. Addition of roadway lighting is designed to minimize lighting of the lakeshore while providing adequate illumination for the roadway and trail.



## Gateway Monument at Brown Road

The addition of a Gateway Monument at the southeast corner of County Road 112 and Brown Road intersection, improves aesthetics and identifies the Village Center. *This is a discretionary spending item and will be funded by the City.*

# Village Center

## Existing conditions

Existing conditions looking east along the north side of Wayzata Blvd. (County Road 112) at Lake Street.



## Potential streetscapes

Streetscape elements are proposed for the project corridor to improve aesthetics and create a sense of place. *This is a discretionary spending item and will be shared by the County and City based on policy.*



# Project area map



## Project background

County Road 112, Wayzata Boulevard, was originally constructed as part of the state's trunk highway system. In December 2008, the Minnesota Department of Transportation completed the Highway 12 bypass, and in 2011 returned jurisdiction of the now former Highway 12 to Hennepin County. As part of MnDOT's project, the roadway was overlain with bituminous to temporarily correct poor pavement surfaces. Other significant improvements of the corridor were not completed.

As a former trunk highway, the roadway was primarily designed for efficient traffic movement through the corridor. The current design does not adequately address many local priorities (such as pedestrian mobility and safety, parking, bicycle trail connectivity, and access).

For more information:

[www.hennepin.us/countyroad112](http://www.hennepin.us/countyroad112)

### Kristy Morter, PE

Transportation Department – Design Division  
Hennepin County Public Works  
1600 Prairie Drive  
Medina, MN 55340  
612-596-0384  
Kristy.Morter@hennepin.us

### Nathen Will, PE

SRF Consulting Group, Inc.  
One Carlson Parkway, Suite 150  
Plymouth, MN 55447  
763-475-0010  
nwill@srfconsulting.com

## Notes:

---

---

---

---

---

---