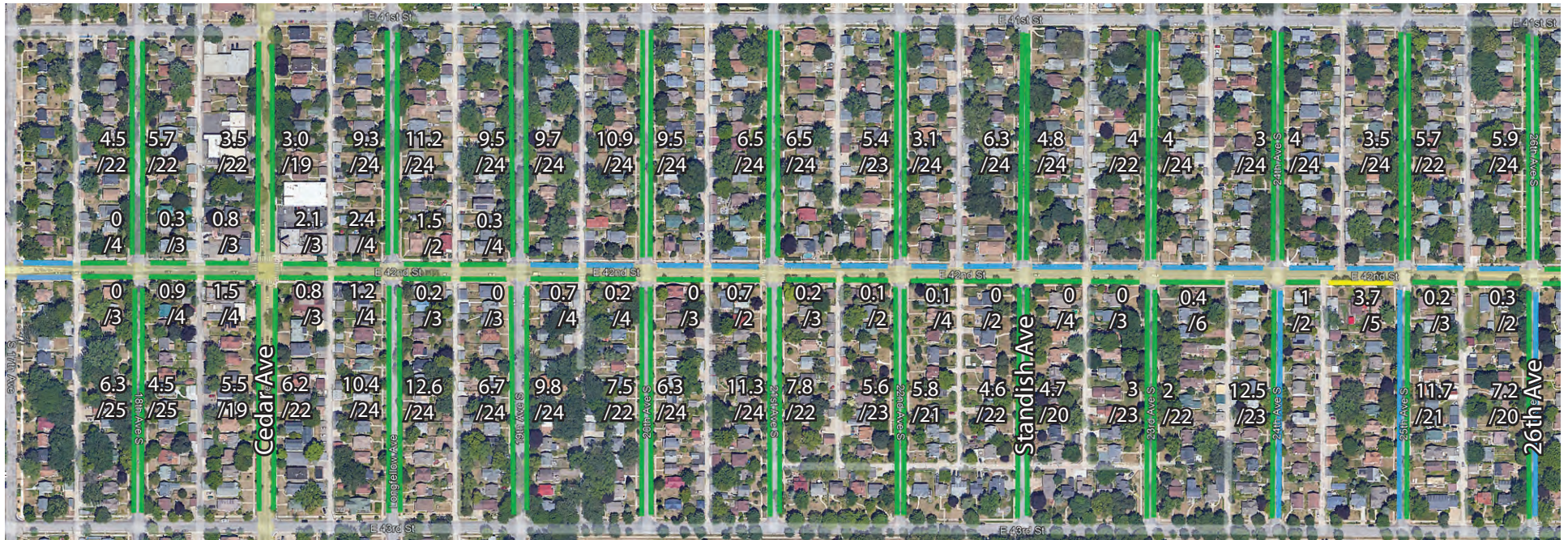


42nd Street Average Parking Use

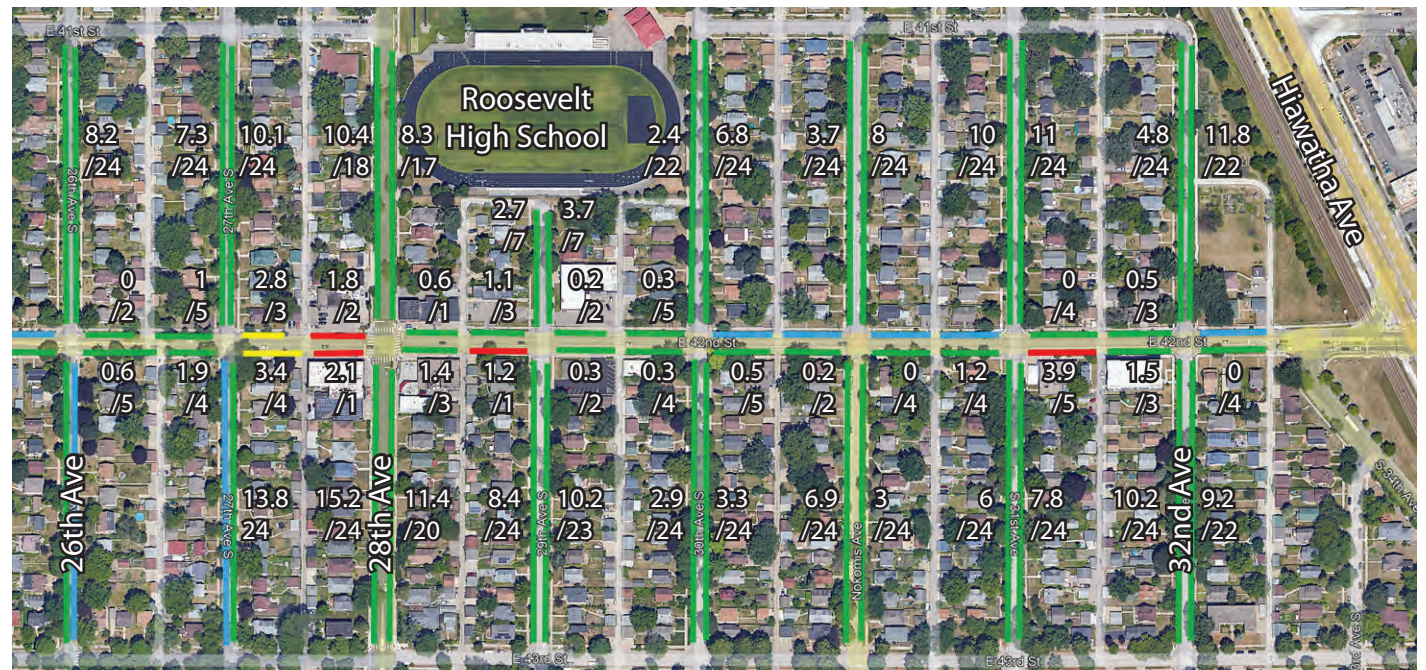


Average parking use

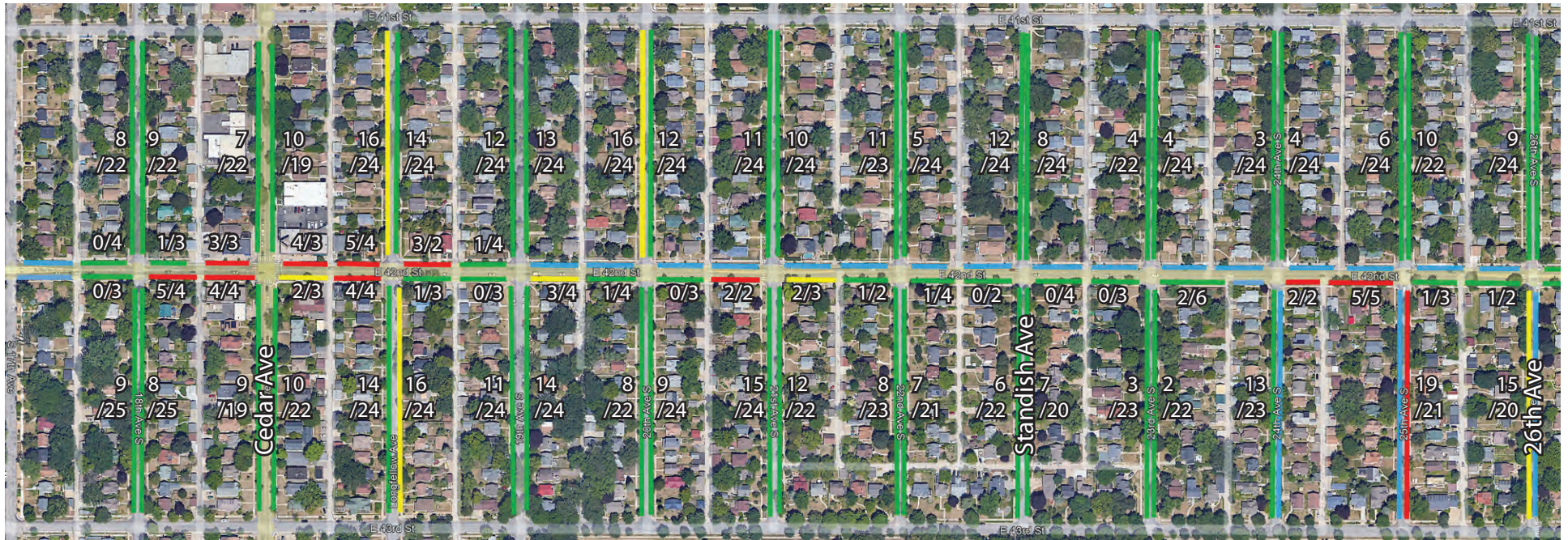
- Parking prohibited in segment
- 90% or greater
- 67% to 90%
- Less than 67%

n/n Parking used/capacity

Up to 13 parking samples taken
 April 15 to April 26 between 7:15 a.m.
 and 7:45 p.m. each day of the week



42nd Street Maximum Observed Parking Use



Maximum parking use

- Parking prohibited in segment
- 90% or greater
- 67% to 90%
- Less than 67%
- n/n Parking used/capacity

Up to 13 parking samples taken April 15 to April 26 between 7:15 a.m. and 7:45 p.m. each day of the week

