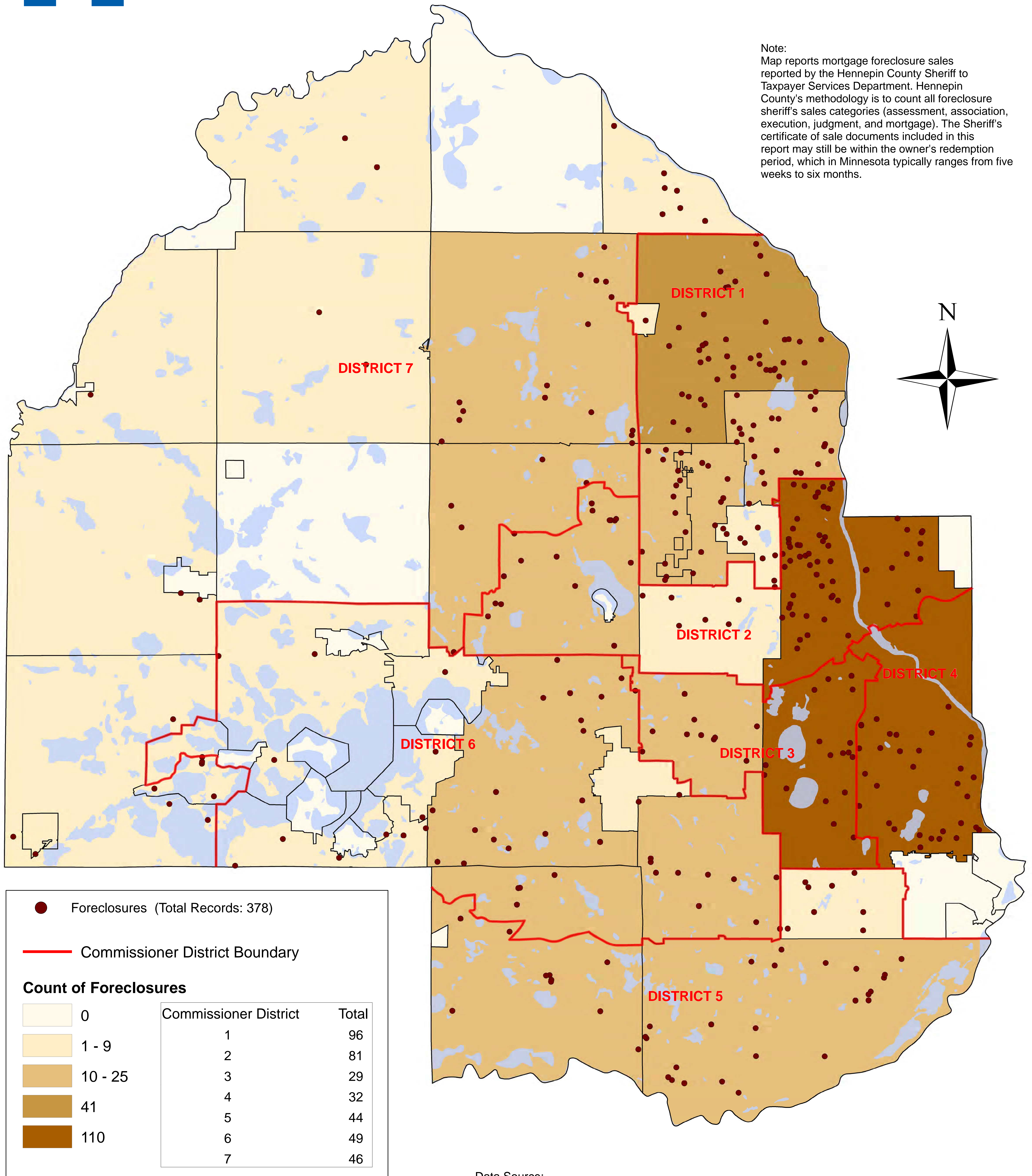




Distribution of Foreclosures January - June 2018 Hennepin County

Note:
Map reports mortgage foreclosure sales reported by the Hennepin County Sheriff to Taxpayer Services Department. Hennepin County's methodology is to count all foreclosure sheriff's sales categories (assessment, association, execution, judgment, and mortgage). The Sheriff's certificate of sale documents included in this report may still be within the owner's redemption period, which in Minnesota typically ranges from five weeks to six months.

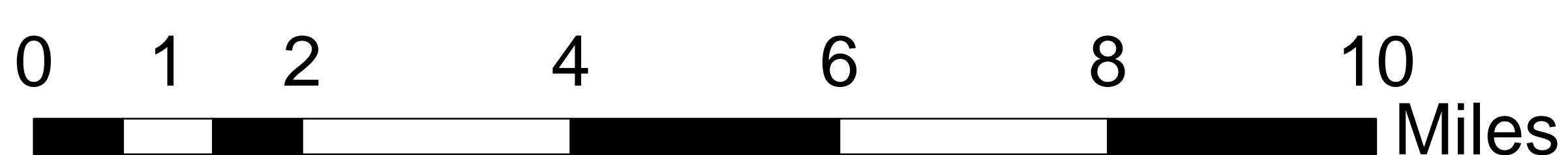


● Foreclosures (Total Records: 378)

— Commissioner District Boundary

Count of Foreclosures

Count of Foreclosures	Commissioner District	Total
0	1	96
1 - 9	2	81
10 - 25	3	29
41	4	32
110	5	44
	6	49
	7	46



Data Source:
June 2018 Sales Extract, Hennepin County Sheriff's Office
Total Records: 378
Records Successfully Geolocated: 377 (100%)
Records Unsuccessfully Geolocated: 1 (0%)

Map Produced by Hennepin County
RRES Department
Survey Division
July 19, 2018