

# Floor and Escape Plan

Use this grid to draw a floor plan. Show the whole house with two exits from each room. In buildings with three or more dwelling units, enclosed exit stairs must be indicated.

## Sample floor plan – A blueprint to save your life

### Symbols to be used:

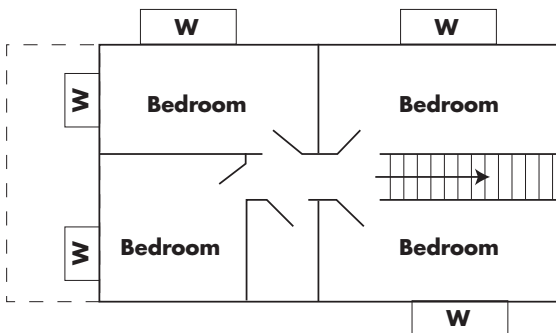
Normal exit route: **Black arrow** →

Emergency exit route: **Red arrow** →

Doors: \_\_\_\_/\_\_\_\_

Porches: \_\_\_\_\_

Windows: **W**



### Fire and police emergencies

Designate a place to meet outdoors for roll call:

Designate a place to meet in case of storm or tornado:

Fire extinguisher locations:

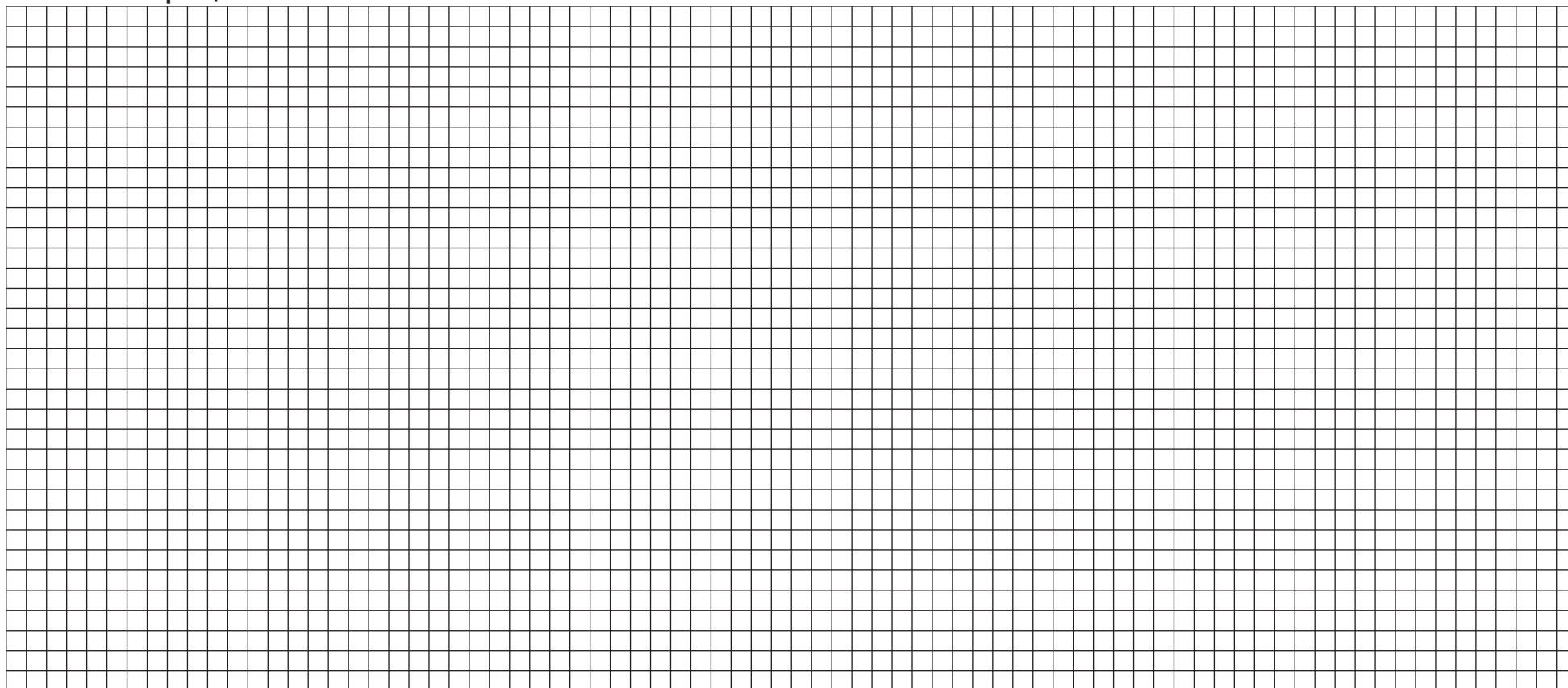
Smoke detector locations:

Basement or lower level \_\_\_\_\_

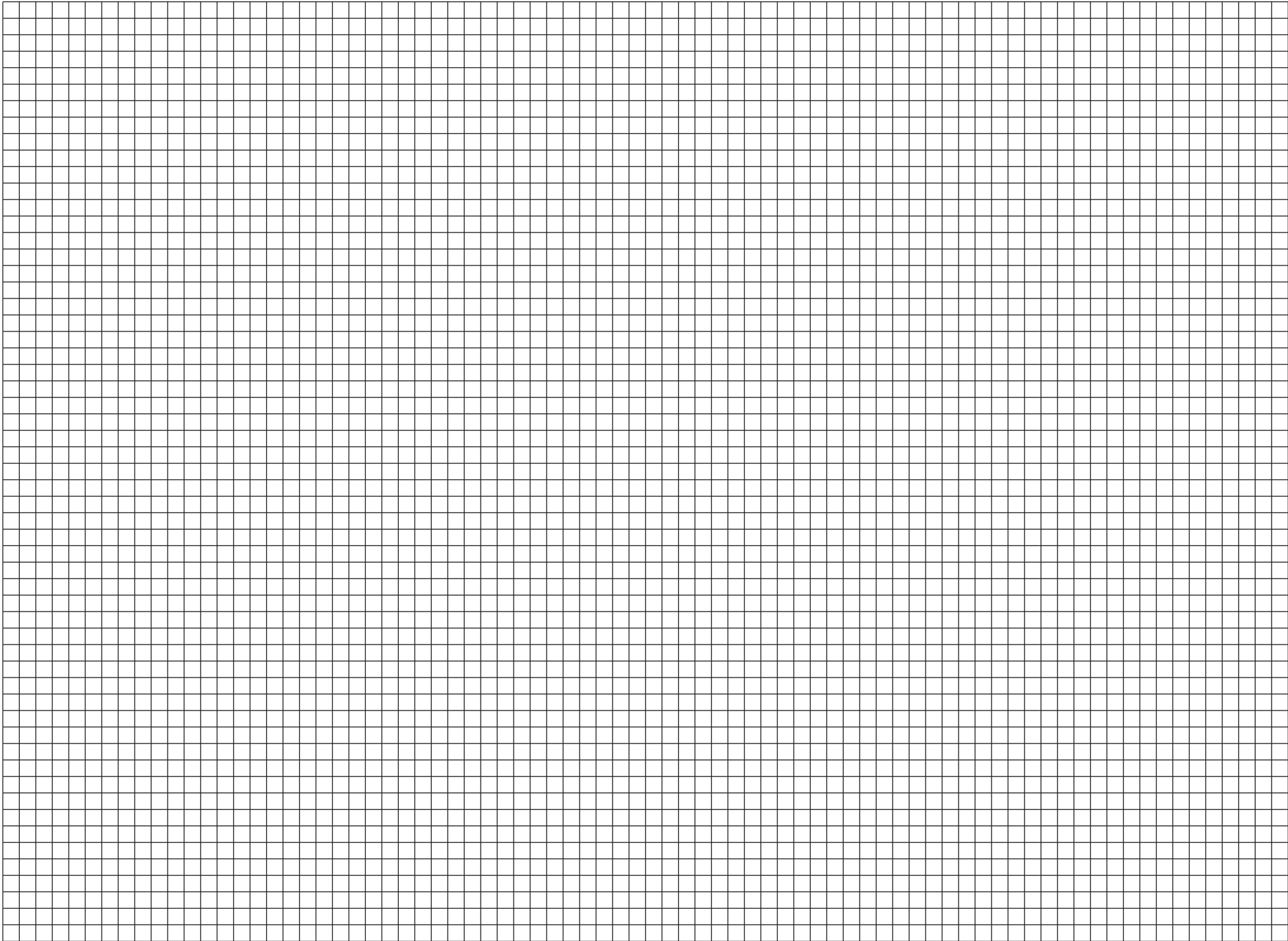
Main floor or upper level \_\_\_\_\_

Second floor \_\_\_\_\_

For additional space, use reverse side



Each square = 1 foot



Each square = 1 foot